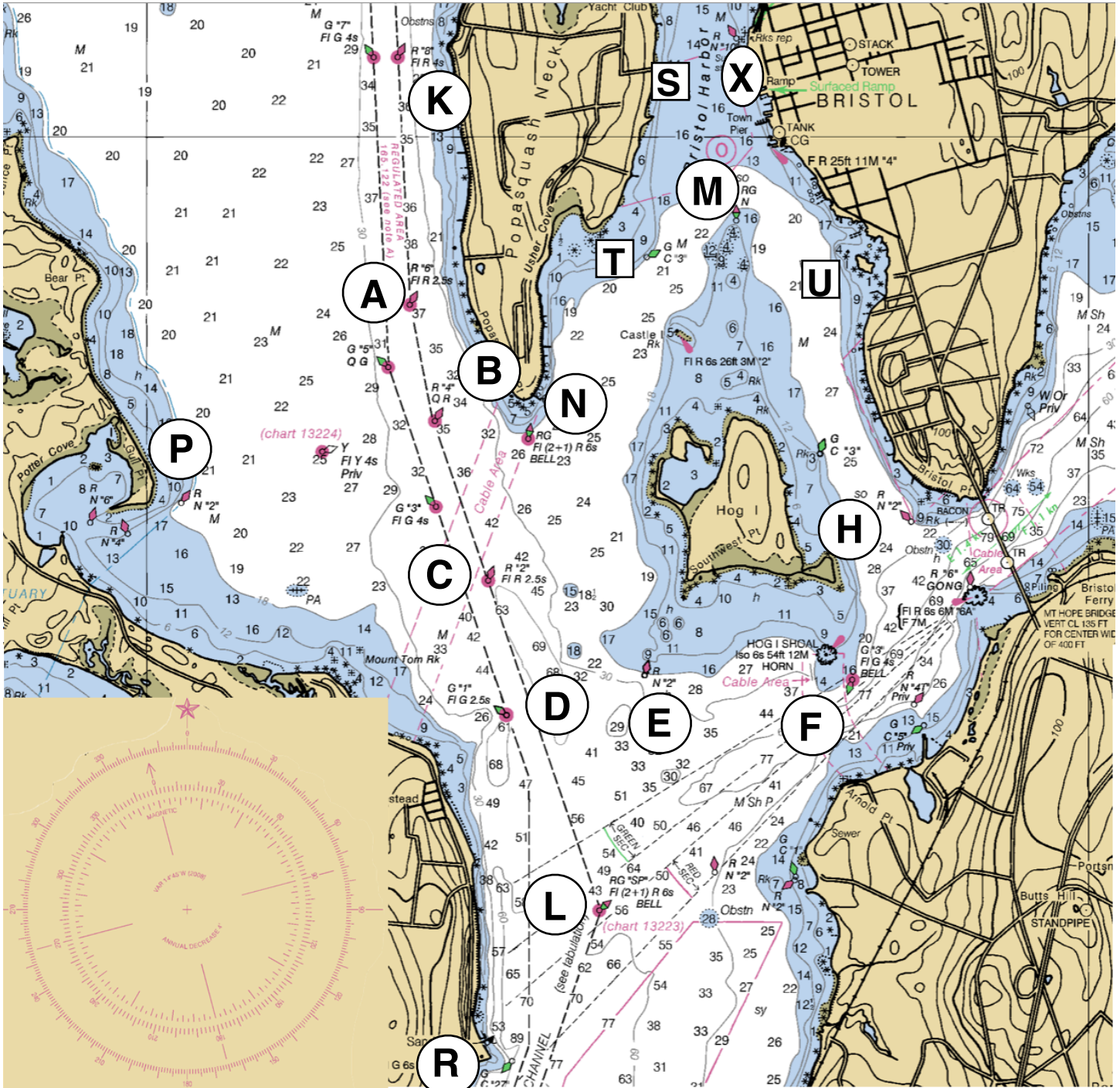




Bristol Yacht Club Courses and Marks 2011



#	NM	Marks
1	3.4	H Port
2	6.6	C Stbd, P Stbd, A Stbd
3	4.5	F Port
4	5.0	C Port, E Port
5	5.0	E Stbd, C Stbd
6	6.9	P Port, D Port
7	5.1	D Port
8	6.9	D Stbd, P Stbd
9	6.4	D Stbd, A Stbd
10	6.4	A Port, D Port
11	5.7	P Stbd
12	6.0	C Port, E Port, F Port, H Port
13	6.0	H Stbd, F Stbd, E Stbd, C Stbd
14	5.4	E Port, F Port, H Port
15	5.4	H Stbd, F Stbd, E Stbd
16	6.9	L Port, F Port, H Port
17	6.3	L Port
18	5.7	P Port
19	8.3	R Port
20	6.1	K Port
21	6.1	A Port, E Port

#	NM	Marks
22	6.9	H Stbd, F Stbd, L Stbd
23	6.3	L Stbd
24	6.1	E Stbd, A Stbd
25	7.9	H Stbd, F Stbd, P Stbd
26	7.9	P Port, F Port, H Port
27	6.2	B Port, P Port, C Port
28	6.2	C Stbd, P Stbd, B Stbd
29	7.4	D Stbd, P Stbd, A Stbd
30	4.8	A Port
31	3.7	B Port
32	2.9	N Port
33	4.2	C Port
34	3.0	N Port, M Port
35	3.0	M Stbd, N Stbd
36	7.4	A Port, P Port, D Port
37	5.75	C Stbd, A Stbd
38	5.75	A Port, C Port
39	5.3	D Stbd, B Stbd
40	5.3	B Port, D Port
41	7.5	D Stbd, B Port, D Port
42	4.5	E Port

Designation	Characteristic	Location
A	R "6" FL R 2.5 Sec.	W. Poppasquash Neck
B	R "4" Q R	WSW Poppasquash Point
C	R "2" FL R2.5 Sec. Bell	W. Hog Island
D	G "1" FL G 2.5 Sec.	NE Homestead
E	RN "2"	SW Hog Island
F	G "3" FL G 4.0 Sec.	S. Hog Island
H	RN "2"	SW Bristol Point
K	R "8" FL 4.0 Sec.	W. Poppasquash Neck
L	RG "SP" FL (2+1) R 6 Sec Bell	0.5 Mi NNE Sandy Point
M	RGN	NE Castle Rock
N	RG FL (2+1) R 6 Sec Bell	SW Poppasquash Point
P	RN "2"	E. Potter Cove
R	G "25" FL G 4.0 Sec.	S. Sandy Point
X	Temporary Racing Mark	W. of Ferry Dock in harbor