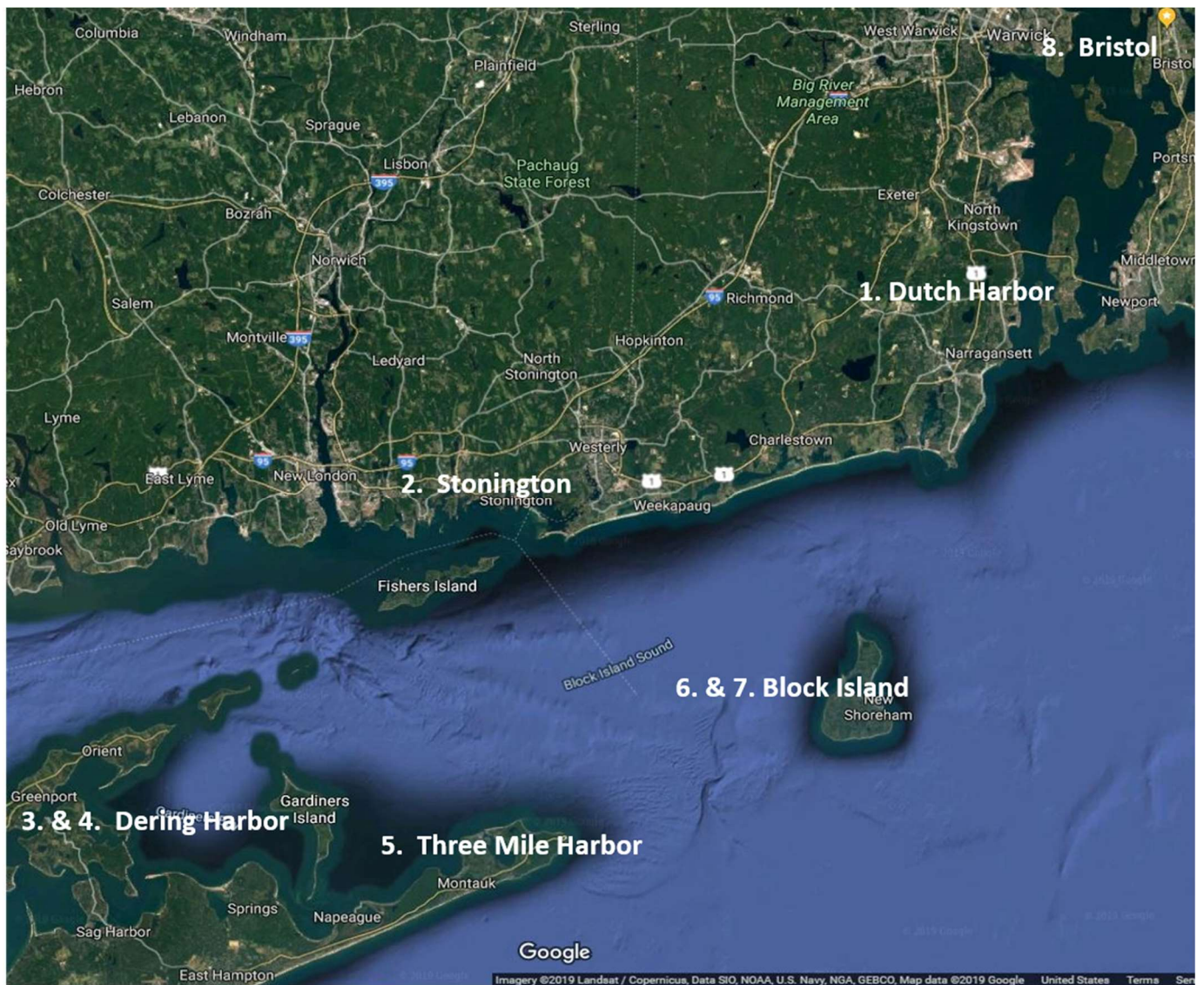




# BYC Summer Cruise

July 20 - 27, 2019



Day	Date	Port	Miles*
1.Saturday	7/20	Dutch Harbor	14
2.Sunday	7/21	Stonington Harbor	32
3.Monday	7/22	Dering Harbor	28
4.Tuesday	7/23/	Dering Harbor	0
5.Wednesday	7/24	Three Mile Harbor	10
6. Thursday	7/25	Block Island	33
7. Friday	7/26	Block Island	0
8. Saturday	7/27	Bristol	34

\* Note: All distances are approximations

## General Information

---

### Communication

The Fleet and Day Captains will monitor VHF channel 72 for official cruise business throughout the cruise, from sunrise to sunset. You may call Fleet Captain Paul Redman by mobile phone at 401-644-5225 or Marilyn Dimson-Doyle at 617-775-4050 if you need immediate assistance. There will be a daily check-in at 0800 on Channel 72 to review current conditions, any last-minute sailing and evening activity updates and to answer questions. If the departure time is earlier than 8:00 due to tides, etc. the new call time will be announced the evening prior.

If you decide to not go to a port that you signed up for please make sure you notify either the Fleet Captain or the Day Captain for that port.

---

### Flags

Please fly your Bristol Yacht Club burgee night and day so that other boats in the cruise can recognize you. Other signals may be flown at each skipper's discretion.

---

### Navigation meetups

Skippers interested in discussion of the next day's course options and sailing advice meet during or after each day's cocktail hour. Time for meeting will be announced at cocktail hour.

## Evening Activities

Highlights of evening activities are listed below. Further details are available in the Gathering section of the specific port.

Port	Gathering Spot	Time	Drink of the Day	What to Bring & Info
Dutch Harbor	Picnic Area on Beach	6:00 PM	Rum Punch	Potluck Appetizers and Side Salads – Grills and a few picnic tables will be available. Bring chairs
Stonington	Walker Building Dodson Boatyard	6:00 PM	Sea Breeze	Catered Dinner by Dog Watch Café – Bring Chairs and Tables
Dering Harbor	Monday - Free Night			Restaurants available: a. Shelter Island Yacht Club – make a reservation prior. b. Ferry to Greenport. c. Some in town near club
Dering Harbor	Tuesday – Shelter Island Yacht Club	6:00 PM	Cash Bar	Potluck Appetizers
Three Mile Harbor	Gather on Beach	6:00 PM	Sangria	Potluck Appetizers – Bring Chairs and Tables
Block Island	Thursday – Block Island Maritime Institute	5:30 PM – Cocktails 6:30 PM - Dinner	Cash Bar	Joint dinner with Block Island Yacht Club - Dinner Catered by Kimberly's Block Island
Block Island	Friday – Free Night			Lots of great restaurants in town

# 2019 Ports of Call

## July 19 - 20 – Dutch Harbor



**DAY CAPTAINS:** Mark and Suzette Stephens

### **BRIEF DESCRIPTION OF PORT:**

Dutch Harbor is a lovely spot in the West Passage between Dutch Island and Conanicut Island which provides back door access to Jamestown less than 1 mile away. The stately homes that face the harbor offer their owners a tranquil view of the harbor and the island that protects it from the swell off Block Island Sound.

### **DISTANCE:**

From Bristol Harbor, Dutch Harbor is a 14 nautical-mile sail.

### **NAVIGATION:**

Leaving Bristol Harbor, head South to the T-Wharf at the south end of Prudence Island. Avoid the shallows east of the lighthouse on Sandy Point. Past the T-Wharf, sail west to Conanicut Point at the north end of Conanicut Island. Avoid Fisk and Halfway Rocks. Round Conanicut Point and head south in the West Passage. Pass under the center span of the Jamestown Bridge. Beware of the fish traps along the shore on your port side. Sail into Dutch Harbor toward the moored boats. Upon entering Dutch Harbor use VHF channel 69 for a mooring assignment.



**TIDES AND CURRENTS:**

High tide in Dutch Harbor on Friday, July 19 occurs at 22:37

**MOORINGS and ANCHORAGE:**

If you reserved a mooring via registration from Dutch Harbor Boatyard, hail the Dutch Harbor Boatyard on VHF Channel 69 and let them know you are part of the Bristol Yacht Club and have a reservation. Provide your boat name. Hail Dutch Harbor for the launch which is available from 0800 until 2200 hours. On Sunday upon departure, please call the boatyard on channel 69 to let them know you are departing. Give your boat name and mooring number. This is a common courtesy and should be used at all ports

Anchorage is available at the south or north ends of the harbor, or at Beavertail.

**FACILITIES:**

Dutch Harbor offers free wi-fi, access to heads, indoor and outdoor showers, laundry, and dinghy dock. *The Shack* is open for snacks from 1100 until 1745 hours. Dutch Harbor offers neither fuel nor water dockside, so top off before leaving Bristol. A grocery store is located a quarter-mile up Narragansett Avenue across from the Post Office. And you'll find a variety of decent restaurants, pubs, and bars a ten- minute walk east in Jamestown. Please remember that launch service stops at 2200.

**GATHERING PLACE & TIME:**

We'll meet at the picnic tables at the left side of the shore (facing the shore from the water) at 6:00PM. T-shirts and cups for Drink of the Day will be distributed in Dutch. If you are joining us at another location, we will have your items available for you when you join us.

We will celebrate the start of the cruise with Potluck Appetizers & Salads and "bring your own item to grill". There are few picnic tables available for us to setup the food. Bring your own chair if you would like to have some other seating.

## July 21 Stonington



**DAY CAPTAINS:** Bob and Camille Hamel

### **BRIEF DESCRIPTION of PORT of CALL:**

Stonington is a pretty town with a large harbor protected by entrance breakwaters, each marked by a light. We are renting moorings from Dodson Marine, a full-service boatyard at the head of the harbor on the starboard side. The Dodson launches are usually very active in the mooring field. The town of Stonington is very walkable, with shops, restaurants, classic New England architecture, and harbor views.

### **DISTANCE:**

About 32 miles from Dutch Harbor to Stonington, CT.

### **NAVIGATION:**

Steer south from Dutch Harbor, round Point Judith, and steer west along the RI coast to Watch Hill Point, R2 (wave to Taylor Swift as you pass). Continue west to flashing red #6 at Napatree Point Ledge and then turn northwest to R2 at Middle Ground. Head north past the two lighted breakwaters and into Stonington Harbor.

### **TIDES AND CURRENTS:**

Low tide at Jamestown on July 21 is at 0441. The current going south to Pt. Judith will be slightly against us, at the most 0.6 knots all morning. After rounding Pt. Judith, the current turns fair to the west at 0850. It is not very strong along the coast before that time, at the most 0.6 against in the morning, so an earlier passage would be fine.

**ANCHORAGE:**

Moorings have been reserved. Hail the Dodson Boatyard launch on channel 78A when you arrive, tell them you are with BYC, and they will give you your mooring number and location. It is customary to tip the launch drivers a dollar or two per trip when you go ashore.

**FACILITIES:**

Dodson Boatyard has showers, ice, water, fuel, and laundry. The boatyard has the Dog Watch Café Restaurant, the Dog Pound outdoor bar, and a gift shop.

**GATHERING PLACE & TIME:**

We will gather for a catered BBQ meal at 6PM in the “Walker Building”. This is a large boat storage shed across the street from Dodson Boatyard along the side of the parking lot. This is planned as a simple get-together, no rented tables or chairs, so bring chairs if you like or just stand to mingle. The Drink of the Day will be a Sea Breeze (Vodka with Cranberry and Grapefruit juice).

The menu will include:

Barbequed Chicken

Pulled Pork

Macaroni & Cheese

Roasted Seasonal Vegetables with Balsamic

Cornbread with Honey Maple Butter

(and possibly a children’s choice – we will update this.)

**NOAA CHART:** Block Island Sound, 13205

**FURTHER READING:** Trip Advisor, Stonington:

<https://www.tripadvisor.com/Home-g33939?fid=2476b16c-ed52-44a6-b281-cdd6aa6b0a52>

## July 22 - 23: Shelter Island Yacht Club at Dering Harbor



**DAY CAPTAINS:** Brian and Carole McFarland

### **BRIEF DESCRIPTION OF PORT:**

Shelter Island is quite beautiful and you are encouraged to walk about and take in the sites and the beautiful residential mansions in the center of town.

Bike rentals are available at Piccozzi's along with maps of the island.

On the main street near Piccozzi's Marina, there are several restaurants including The Chequit, The Dory, and the Marie Eiffel Market.

From the Yacht Club, you can walk over the hill to the ferry docks which will take you across to Greenport. Greenport has shops and restaurants, including the famous Claudio's, which was heavily involved with Rum Running during Prohibition.

Greenport is on the north fork of Long Island, and is well known for several Wineries.

### **DISTANCES:**

Stonington to Shelter is approximately 28 nm.



**NAVIGATION:**

Low tide is 7:39 am in Stonington which creates a favorable current since the tide floods East to West in Block Island and Long Island Sounds. Your choices for route will depend upon your personal preferences.

Leaving Stonington, you can turn West and pass through Fisher Island Sound, keeping Fisher Island to port, or you can go out at Watch Hill into Block Island Sound and head to Gardiner's Bay, keeping Fisher Island to starboard. Choosing Fisher Island Sound has two concerns: The sound itself has numerous rocks and ledges so carefully read your charts and make sure you know which buoy you are passing. The second concern is when you reach the west end of Fisher Island and head southwest to the G"11", you need to pass through "The Race", which is notorious for cross currents, whirlpools and other excitements.

Another approach is going out at Watch Hill, heading WSW to the G"1G" (41.09.0 72.08.0) and leaving the "G11" at the Race, well to starboard. As you enter Gardiner's Bay, you will leave little Gull Island to starboard. From the G"1G", proceed 6 miles at 254 degrees to the RW"N" which puts you in a well-marked channel on the north side of Shelter Island into Orient Harbor. At the G"7" turn to port and follow the shore line to Dering Harbor on our port side. Stay well clear of Dering Point on your portside and follow the markers into the harbor. The Shelter Island Yacht Club is on the west side of the harbor.

**NOAA CHART**

12354

**MOORING & ANCHORAGE:**

Moorings have been pre-reserved for you based on your registration information. When you enter the harbor hail the Shelter Island Yacht Club on Channel 74 and inform that you are with the BYC and have a pre-reserved mooring. Provide them your boat name. They will direct you to your mooring.

**FACILITIES:**

Launch service is available from the Yacht Club from 0800 to 2200 hours. Shower, ice and trash/recycling are available at the yacht club. Diesel and Gas fuel and pump out are available at Piccozzi's Marina at the south end of the harbor.

**GATHERING PLACE & TIME:**

Monday evening is a free night. You can have dinner at the Shelter Island Yacht club, which has a lovely dining room and a selection of dinner options. <https://www.siyc.com/facilities/clubhouse/dining/>. Reservations are recommended. (631) 749-0888

Tuesday evening will be potluck appetizers at 6:00pm at the Shelter Island Yacht club with a Cash Bar at the club.

## July 24: Three Mile Harbor



**DAY CAPTAIN(S):** Brian Fitzgerald & Julie Englund

**BRIEF DESCRIPTION of PORT of CALL:**

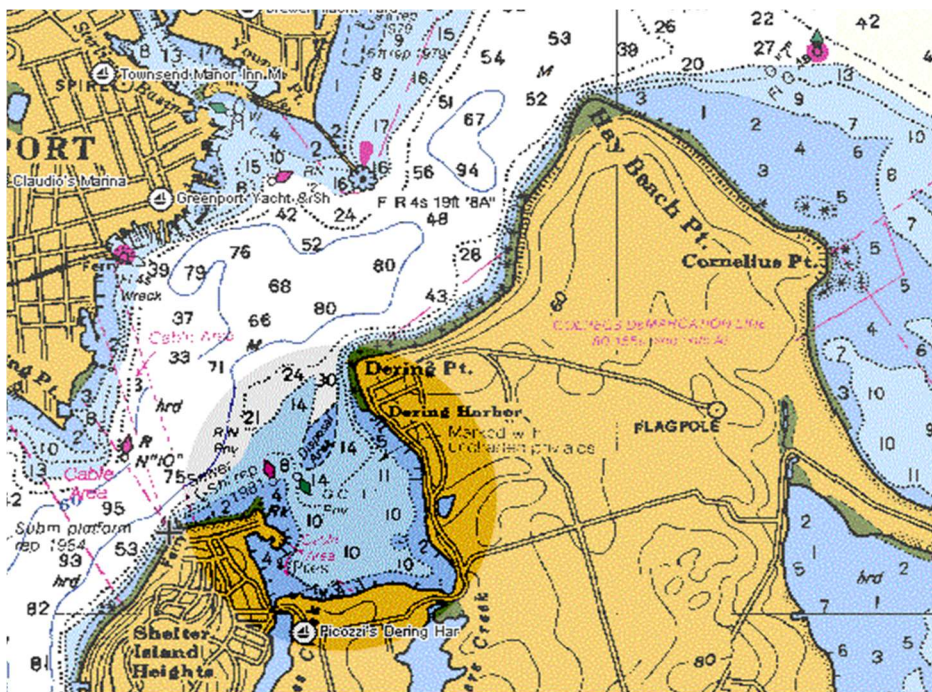
Three Mile Harbor Three Mile Harbor is conveniently located between Sag Harbor and Amaganset. This beautiful harbor is East Hampton's most popular port with access to marinas, anchorages and more. The harbor is well protected and offers a beautiful natural anchorage. The harbor is extremely long and very shallow along the west side of the channel. More information on navigation is below.

**DISTANCE:** From Dering Harbor approximately 10 nm

**NAVIGATION:**

Three Mile Harbor inside anchorage is latitude is 41 degrees 2.274 North and longitude 72 degrees 11.384 West.

From Dering Harbor Buoy 1 (Green) to starboard entering the main channel the route proceeds clockwise heading northeast around the tip of Shelter Island and then southeast along Shelter Island to the entrance of Three Mile Harbor. Head for Green "7" then to Green "3". Stay well to the north of the shore heading to the entrance of Three Mile Harbor.

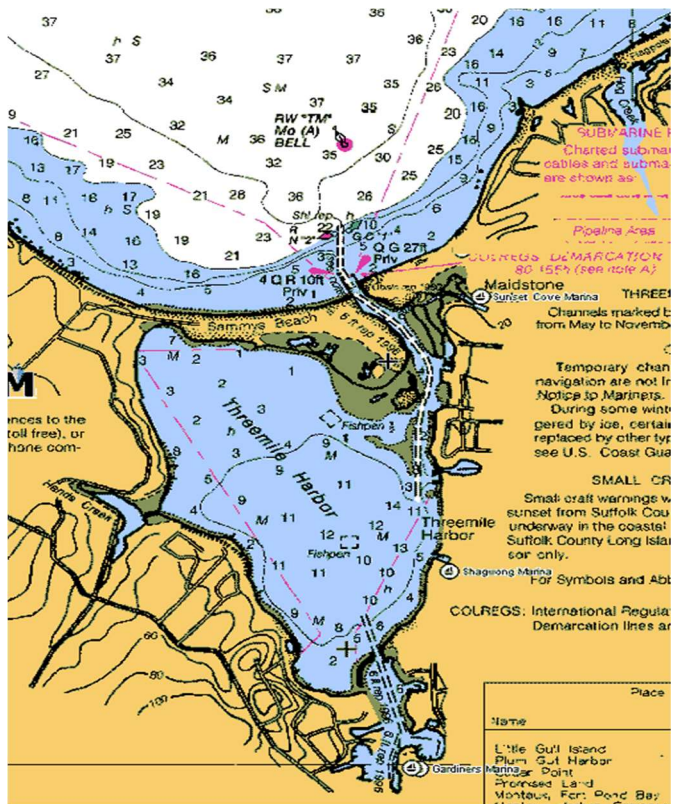


## Approaching Three Mile Harbor

Three Mile Harbor Entrance Buoy 1 (Green) and Red lateral buoy (nun) "2".

The waters outside Three Mile Harbor are open and deep. In approaching the channel, the depth drops off significantly outside the channel. There is a red and white mid channel marker approximately half a mile from the entrance to harbor indicating the channel. Outside the

channel near the beaches, the water is approximately 4-5 feet deep. There is a public beach and jetty located on the eastern side of the channel. There is enough depth on the western side for some boats to anchor, but it may be very rough with all the traffic from local boats.



To enter the harbor, pass through two jetties to access the inner harbor. The channel is narrow with a current that will either help or hinder your entrance to the harbor.

## Inside the Harbor

Once inside the jetties the channel is well marked with red and green buoys. Stay in the channel. The channel is dredged every few years and can accommodate large vessels. These channel markers are privately maintained from April through November.

## MOORING & ANCHORAGE:

At Three Mile Harbor, BYC boats will be anchoring inside the harbor. The anchorage area is located on the starboard side of the harbor as you enter (west to northwest side of the harbor). The anchorage area inside Three Mile Harbor offers plenty of depth and swing room. There is a sand and mud bottom offering a good holding ground.

To access the anchorage, follow the channel deep into the anchorage. There is a large sandbar along the western side of the channel. The sandbar begins approximately half a mile inside the entrance. You will not be able to pass over this sandbar. At the northern point of the sandbar the depth is only a few inches at low tide. To access the anchorage area, continue past Green 19 and a private Green in the channel and continue well beyond the private marker prior to turning into the western section of the harbor. Pay close attention to the chart and depth.

Once inside the anchorage you will find an ample amount of water with a good holding ground for anchoring. There is a water ski area where you cannot anchor and should avoid due to boat wakes. The northern and northwest corners of the anchorage area become very shallow (3-5 feet), so larger vessels will want to stay in the middle of the anchorage.

**FACILITIES:**

The East Hampton Harbormaster has free pump out service and fuel at Green 19. Call the Harbormaster on pump out boats on VHF channel 9. Phone number is 631-329-3078. There is also a free pump-out boat Thursday – Monday beginning at 9:00am.

Three Mile Island Marine Services:

<http://www.ospreysguide.com/CruiseGuide/cruisegEH/cruiseg3MI/cruisg3MIMServ.html>

**GATHERING PLACE & TIME:**

BYC will assemble on the beach at 6:00 pm. The exact location will be provided by the harbor master after we enter the harbor. We will notify all at a designated time during the morning briefing. BYC will provide the drink of the day which will be Sangria. Please bring appetizers to share and tables and chairs

**TIDES AND CURRENTS:**

Currents out of Dering Harbor begin at 7am. Ebb begins (out of Dering Harbor) at 6am reaching .9 by 8:30am. Slack will be at 11:46am. High tide at Three Mile Harbor Entrance is at 4:40pm. Low tide begins at 9:57am and again at 10:35pm.

**FURTHER READING:**

For more detail see: <http://www.ospreysguide.com/CruiseGuide/cruisegEH/cruisgEH.html>



## July 25 & July 26: Block Island



**DAY CAPTAINS:** Bob McLaughlin & Dave Niemeyer, C&C 110 SN 61773, "*Blue Devil*"

**DISTANCE:** From Three Mile Harbor to Block Island (33 nm)

### **BRIEF DESCRIPTION OF PORT OF CALL:**

Block Island is located off the coast of Rhode Island, approximately 14 miles (23 km) east of Montauk Point, Long Island, and 13 miles (21 km) south from mainland Rhode Island, from which it is separated by Block Island Sound. It was named after Dutch explorer Adriaen Block.

Block Island has no natural harbors. Breakwaters were constructed in 1870 to form Old Harbor on the east side of the island. New Harbor, with its entrance on the west side of the island and where we are gathering, was created in 1895 when a channel was dug to connect the Great Salt Pond to the ocean through the land.

The Block Island Wind Farm is the first commercial offshore wind farm in the United States, located 2.8 miles SE of Block Island. The five-turbine, 30 MW project was developed by Deepwater Wind. Construction began in 2015 and in late summer 2016 five Alstom Haliade 150-6-MW turbines were erected. Operations were launched in December 2016. It is the largest project using wind power in Rhode Island. A portion of the power is supplied directly to Block Island which had some of the highest power rates in the country due to its local generation by small diesel-powered generators. Power costs on the island are predicted to be cut by 40%.



## NAVIGATION:

Leaving Three Mile Harbor, it's about an 8 mile course from RW Bell "TM" outside the harbor following around the channel past Lionhead Rock (C"13") past the shoaling south of Cartwright Is (the small sand strip extending from Gardiners Is) and passing N"8", N"6", N"4", N"2" out to RW Bell "S" by Goff Pt. Pay attention to the marked channel in this area as there are several shoal areas under 5'.

From the RW Bell "S", its 8mi on a course of 066m to the buoy at Shagwong Reef G Bell "SR".

It's recommended to leave Shagwong Reef (G Bell 7"SR" Fl G 2.5s Bell buoy, 41-07-02.223N, 071-54-49.540W) off your starboard, giving the 6' and 12' shoals their due, while also staying out of the stronger tide rips that run around the end of Long Island.

Once clearing Shagwong Reef, it is a straight 15.4mi shot of 086m degrees and open water to the entrance of the Great Salt Pond on Block Is. In reduced visibility, be alert for traffic along this course as it's the direct route between Montauk area harbors and Block Is.

Make note of the currents and possible set of your course depending on your time of passage (per Eldrige):

When approaching Block Island from ~ 3 Mile Island, from the WSW as we will be, Block Island will likely first appear as two islands with the north elevations being ~100' above sea level and the southern end being the taller, ~150'.

On the northern most end of the island, Sandy Point, is the North Lighthouse w a Fl 5s light with a height of 58ft. Approaching from Montauk, the Block Island Southeast Light is also visible on the far side of the island, given its height of 261' w a Fl G 5s light visible for 20 miles and a horn every 30s when visibility is reduced.

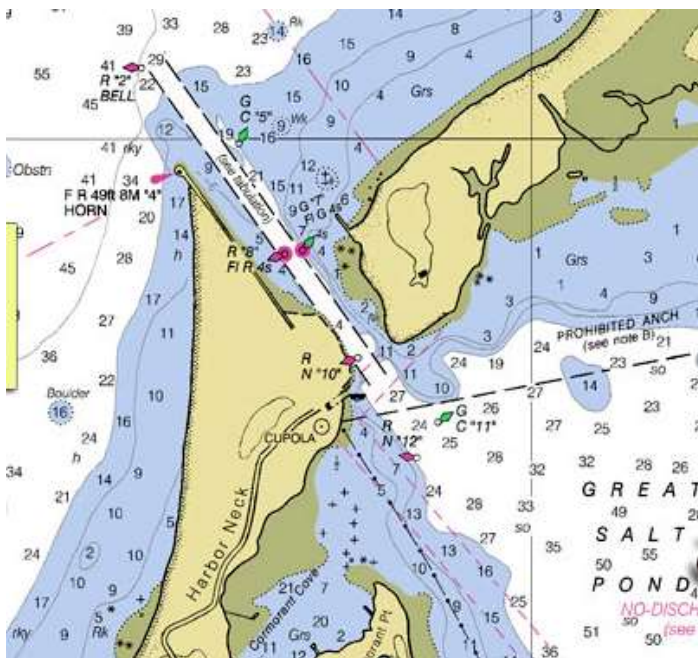
Entrance Bell buoy R"2" (41-12-05.370N, 071-35-39.027W) marks the entrance channel to the Great Salt Pond (also called New Harbor) and is ~1.75 NM south of the North Lighthouse on Sandy Point (Built in 1867).

At the entrance on the end of the breakwater there is Breakwater Light "4", a 49' skeleton tower R"4" with a flashing red light visible for 8 NM also equipped with a HORN every 10s in reduced visibility. (To activate horn, turn VHF to Ch 83A and key your microphone 5 times consecutively which will activate the horn for 60 min.)



The entrance to Great Salt Pond is straight forward however the channel can be very crowded with traffic. Note that the channel runs parallel to the jetty but not right adjacent to it. Line up R"2", R"8" and R"10" to stay in the fairway.

THE HARBOR IS A STRICTLY ENFORCED NO DISCHARGE ZONE!



#### TIDES AND CURRENTS:

July 25: Block Is High Tide 2:13PM, Low Tide 8:57pm

July 26: Block Is High Tide 2:38AM & 3:08PM, Low Tide 8:26AM

#### MOORINGS AND ANCHORAGE:

Upon arrival into the Great Salt Pond (requested no earlier than around 2pm) arrivals should contact the Block Island Harbormaster on VHF channel 12, identify themselves as being members of the BYC cruise and ask for a mooring assignment.

Should you decide to anchor, note that The Great Salt Pond has notoriously poor holding ground. Its recommended if you do anchor to use a Danforth type anchor in the center harder bottom areas and a plow around the edges in softer areas and use plenty of scope (easier said than done given the summer crowds using the anchorage). The far eastern side of the pond is said to have lots of oyster shells and a submerged water supply line, both making it a poor location to attempt to anchor. Note to the prohibited anchorage area in the northern quarter of the pond

## FACILITIES:

<http://cruising.coastalboating.net/Destinations/NE-US/Islands/BlockIsland/Boat-Crew.html>

### Holding Tank Pump Out

Champlin's onsite on call. Efficient high-speed pump-out via 3 boats on ch 73. Tips appreciated.

### Dinghy Docks

1. At Champlin's Marina
2. At the Block Island Boat Basin, near the Oar restaurant, however one can only use the on-land side where I'm told low tide makes it interesting.
3. At the new Town docks, in the SE corner of the harbor between Payne's and Dead Eye Dicks

## GATHERING PLACE & TIME:

Thursday's group dinner is a joint event with the Block Island Yacht Club at the Block Island Maritime institute (otherwise known as BIMI) at 5:30pm for Cocktails and 6:30pm for Dinner. BIMI is just south of and next to Deadeye Dicks restaurant in New Harbor/Great Salt Pond.

We will need to assemble some volunteer BYC members ~30-45 minutes before dinner to help set up tables and chairs. PLEASE LET ME KNOW IF YOU CAN LEND A HAND.



The best dinghy dock is the new dinghy dock on the channel into the "Hog pen" in the SE corner of the harbor. The dock is located between Payne's Dock and Deadeye Dick's restaurant. It is the new town dinghy dock.

## Possible Friday activities:

**Quahog adventure:** Join Bill Ohley to dig for quahogs. Low tide on Friday is around 9:30. See the link for BI shellfish regulations(<http://www.new-shoreham.com/docs/ShellfishBroch.pdf>). Bill will help those interested in this adventure by meeting at the harbormaster shack at 9 am (that's by the west side of the boat basin - the Oar), with photo ID and \$20 or \$10 (over 65), to get the required shellfish licenses (made up in the shack with photo) and then proceed to flats (areas 2 and 3 on map). We should be able to find quahogs of appropriate size. Bill normally use fingers and feet, but rakes are ok too.

**Block Island Wind Farm:** On Friday there is a tour of the Block Island Wind Farm at 3:45pm. <http://biwindfarmtours.com/>. You can purchase tickets on their website

Enjoy a cruise on Block Island Sound aboard the Block Island Ferry's Hi-Speed ferry MV Islander. Two inside air-conditioned cabins and ample outside viewing areas, as well as an upper sun deck. A local guide and wind farm enthusiast will give you a narrated tour while cruising around the wind farm.

Depart from Old Harbor Block Island ferry dock at 3:45 pm.

Duration: 1hr. \$25 Adult, \$15 Child (ages 5-11).

#### **OTHER ACTIVITIES Available on the Island**

1. *Block Island Taxi Tour* Perhaps the best way to learn the most about Block Island in the least amount of time is to take in the sights with a narrated taxi tour. There are no tour bus or trolley companies on the island, so a "taxi tour" is the way to go.

In just about an hour's time, you will travel the entire island, from the granite North Light overseeing the Block Island Wildlife Refuge at the northernmost point to the stunning Mohegan Bluffs, rising 150 feet above the sea below.

Many of the drivers are long-time island residents, so you'll learn the all about the island of today and yesterday, while getting the inside track on where the locals like to eat, drink, shop, fish and enjoy sun and surf. Most Block Island taxis fit between 8 and 11 people, so no worries if you're with a group. You can go to the Taxi Stand at Old Harbor to grab a cab, or call a taxi to pick you up. For a list of taxi companies and phone numbers, go to <http://www.blockislandinfo.com/what-to-do/tours/tours-by-land> .

2. *Abrams' Animal Farm* A collection of exotic and domestic animals is maintained by Justin Abrams, owner of the 1661 Inn & Hotel Manisses. The small hobby farm between Spring and High streets is home to llamas, emus, sheep, donkeys, goats, swans, ducks, even camels on the hillside meadow south of the hotel. Feed is available for the hungry goats and emus. No charge and accessible from dawn to dusk. Spring Street. Phone: 401-466-2421
3. *Horseback Riding. Rustic Rides Horse Farm*, 1173 West Side Rd, New Shoreham, RI 02807. Guided trail rides to the beach and nature preserve. Ages 4+, no experience needed. (401) 466-5060 for reservations
4. *Pond & Beyond Guided Kayak Tours* Daily eco-tours, kid programs, family tours, groups, full moon paddle, sunset paddle, women only. Instruction for beginners. Tour reservations recommended. Experience the island via kayak, guided by an islander—a naturalist. Various boat styles available including touring boats by Perception and Wilderness, kid-size boats and tandems. Tours approx. 2 hours on the water. Custom tours available. Located on Ocean Ave. at Smuggler's Cove. [corrie\\_estelle@hotmail.com](mailto:corrie_estelle@hotmail.com). Phone: 401-578-2773
5. Also *Fort Island Kayaks* Offering single and tandem kayaks, and rental snorkeling gear. Call for reservations and information. Ocean Ave, next to the bridge in New Harbor. Phone: 401-466-5392
6. *Historical Society Museum* Interesting exhibit of artifacts from the farming and fishing period to the rise of tourism in the Victorian era. The featured summer exhibit is "Block Island Idyll: Memories of Manisses." Also "Sperry Andrews: Paintings of Old Block Island." Ask about guided tours of the Island Cemetery, Old Harbor area and Native American sites. Old Town Road. Open

daily 11 a.m. to 4 p.m. Admission \$6, seniors and students \$4, children free.  
[blockhistory@me.com](mailto:blockhistory@me.com). Phone: 401-466-2481

7. *Island Bike & Moped* Behind the Harborside Inn selection of rental bicycles and new model mopeds, mountain bikes, beach cruisers, tandems and tag-alongs. Six-speed Jamis Boss Cruisers and 21-speed mountain bikes are for rent. Children's seats, helmets and eye protection are available. 8 a.m. to 7 p.m. daily. Located at Chapel Street, just off Water Street. Phone: 401-466-2700. Also, *Moped Man and Old Harbor Bike Shop*. Water Street, across from the ferry. 401-466-2029
8. *Historic Empire Theater* <http://www.empiretheaterblockisland.com/> Evening and rainy-day matinee movies. Built in 1882 first as a roller-skating rink and then in the 1890s converted into a theater, and now serves as the island's movie theater with occasional playhouse productions. 17 Water St.
9. Block Island Maritime Institute <http://bimaritime.org/our-mission/>.
10. Tour aboard an Oldport Marine's launch and get some little-known facts about the history, folklore and ecology of Block Island's treasure – The Great Salt Pond. \$20 pp. MUST call 401-500-3501 to reserve a spot Many other programs, several oriented for children:  
<http://bimaritime.org/for-early-learners/>
11. *Hiking on the Island (and Blown Glass Art Globes treasure hunt)*:  
<https://www.trails.com/us/ri/block-island/the-greenway> Explore and find one of more than 500 glass orbs around Block Island's greenways which Artist Eben Horton famously hides each summer in a project that's half treasure hunt, half conservation education.
12. *Visit/hike Mohegan Bluffs and the Southeast Lighthouse* The Mohegan Bluffs are large clay cliffs about 150 feet high, located on the southern shore of Block Island. These cliffs are a beautiful site, and can be observed from the top, where visitors can look out for miles on the Atlantic Ocean or visitors can climb down the steep staircase of over 100 steps and view them from the beach (also known as Corn Cove). Through the years, the Mohegan Bluffs have eroded about 250 feet, and because of this, the Block Island Southeast Lighthouse had to be moved back about 360 feet to keep it from tumbling into the ocean. NOTE Southeast Lighthouse is undergoing repairs and while it can still be visited, one cannot climb the tower.

#### Island Restaurants

<http://cruising.coastalboating.net/Destinations/NE-US/Islands/BlockIsland/Dining.html>

#### NOAA CHART:

Block Island Sound and Gardiners Bay #13209\_1  
Block Is Sound, Pt Judith to Montauk Pt #13215\_1  
Block Island Sound and Approaches #13205  
Great Salt Pond #13217



## July 27: Bristol Yacht Club



**DAY CAPTAIN(S):** Paul Redman

**SPECIAL NOTE:** The **Save the Bay Swim** will be taking place July 27<sup>th</sup> in the morning. Approximately 500 swimmers and 200 kayakers will be making the 1.7 nautical mile open water journey across Narragansett Bay from Newport to Jamestown.

Sailors leaving Block Island early may need to take the West Passage as the East Passage is expected to be closed to boating traffic from 5:30 a.m. to 10:00 a.m. For more information, contact the Newport harbormaster's office at (401-845-5815).

**BRIEF DESCRIPTION of PORT of CALL** – The Bristol Yacht Club, the premier yacht club in Narragansett Bay!

**DISTANCE:** Approximately 33nm under power or with favorable southerly winds. In the event of a northerly winds, those choosing to sail will be tacking up wind which of course will add additional distance, but also be lots of fun.

**NAVIGATION:** The channel leaving Great Salt Pond is well marked. Once abeam to R2 Bell set a course to 1BI making sure you leave it safely to starboard at all times. With favorable southerly winds, once

abeam of 1bl, you may consider a course of 70m degrees for 5.5 NM to the R2 Whistle. (WP N41 18:45 W071 28:36) Once arriving at R2, a course of 043 degrees for approximately 10.2 miles will keep you clear of Pt Judith and Brenton Reef, west of the separation zone to R6 which is at the mouth of East Passage of Narragansett Bay, just south and west of Castle Hill light house. From there, our home Narragansett Bay, is well marked all the way up to Bristol and beyond. In the event of low visibility, be cautious and extra mindful of large ship traffic as you cross the outbound and join the inbound lanes used by larger vessels entering and departing Narragansett bay.

**TIDES AND CURRENTS:** Currents between Block Island and Newport are not as big of a concern as they are further west or east. But who doesn't enjoy taking advantage of some additional speed?

Leaving Great Salt Pond on at the Start of the Ebb at the Race 08:54am or an hour or so thereafter, will ensure you favorable currents all the way home. If you leave right at the Ebb, you will have a very slight head current of .03 knots for a short while, however, once you round 1Bl, you will have a 1 – 2 knot current pushing you east favoring a course to Newport. Low tide in Newport is at 10:23am. Those arriving at that time or shortly thereafter will take advantage of the flood all the way home.

**NOAA CHART:**

**Great Salt Pond – NOAA Chart # 13221 –**

<http://www.charts.noaa.gov/PDFs/13215.pdf>

**Block Island Sound**

<http://www.charts.noaa.gov/PDFs/13205.pdf>

**Narragansett Bay**

<http://www.charts.noaa.gov/PDFs/13221.pdf>