

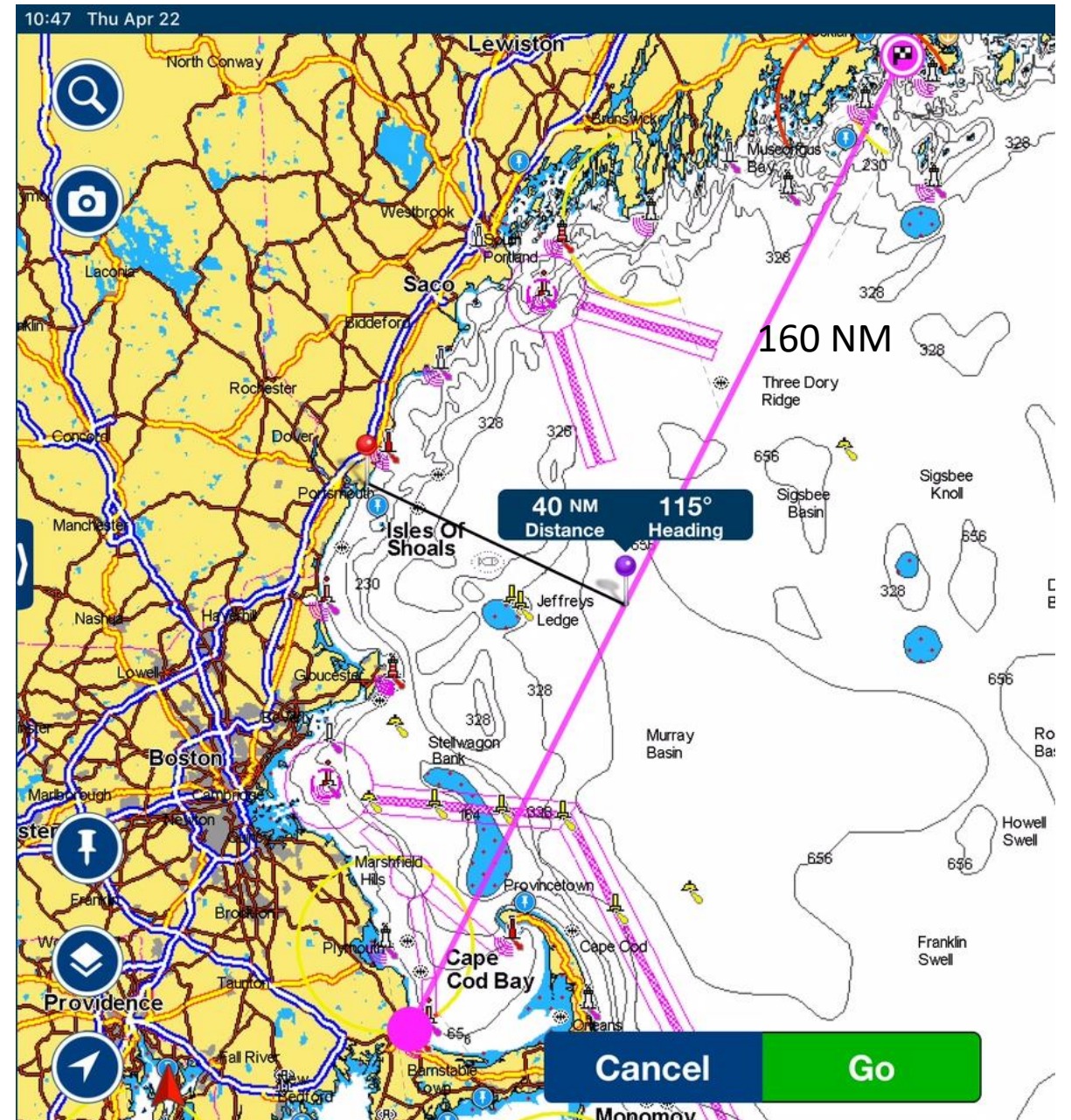
Weather Forecast Sources

Different Sites provide Different Perspectives

Jil Westcott

Overnight Route

- Direct route takes you 40 NM offshore reaching the limits of NOAA Zone Forecasts
 - At 6 knots, about 27 hours
 - At 5 knots, about 32 hours



Noaa Zone Forecasts

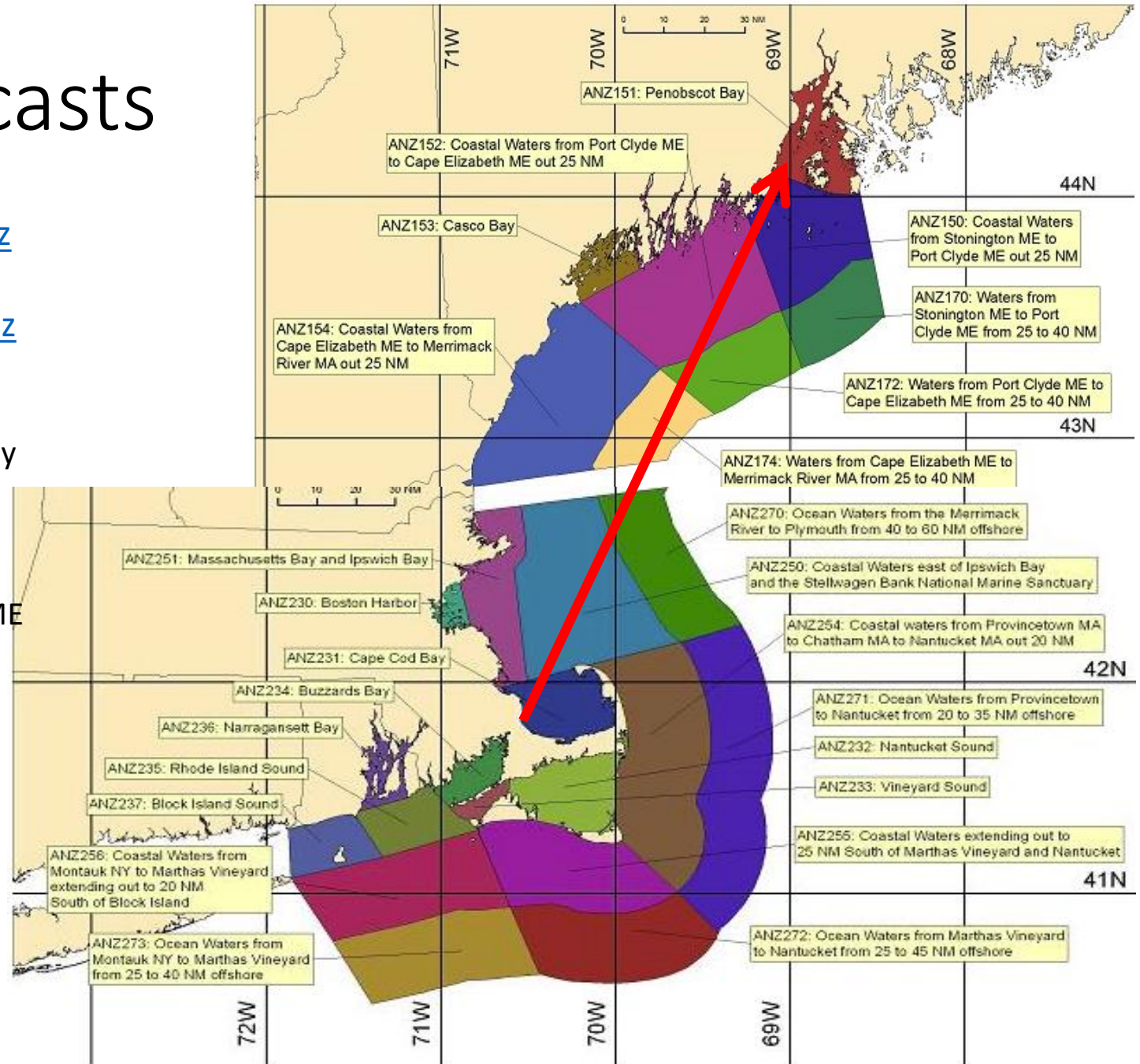
<https://www.weather.gov/marine/gyxmz>

&

<https://www.weather.gov/marine/boxmz>

- ANZ231 Cape Cod Bay
- ANZ250 Coastal Waters east of Ipswich Bay and Stellwagon Bank
- ANZ172 Port Clyde ME to Cape Elizabeth Me from 25 to 40 NM
- ANZ152 Coastal Waters from Port Clyde ME to Cape Elizabeth Me out to 25 NM
- ANZ150 Coastal Waters from Stonington ME to Port Clyde out 25 NM
- ANZ151 Penobscot Bay

Note: 25 nm to 40 nm zone forecasts not provided



ANZ141: Cape Elizabeth ME to Merrimack River from 25 to 40 NM

Hazardous Weather Conditions

- [Gale Warning until April 23, 02:00 AM EDT](#)
- [Hazardous Weather Outlook](#)

Last Update: 1016 AM EDT Thu Apr 22 2021

[View Nearby Observations](#)

25NM ESE Gloucester MA

Marine Zone Forecast

...GALE WARNING IN EFFECT THROUGH LATE TONIGHT...

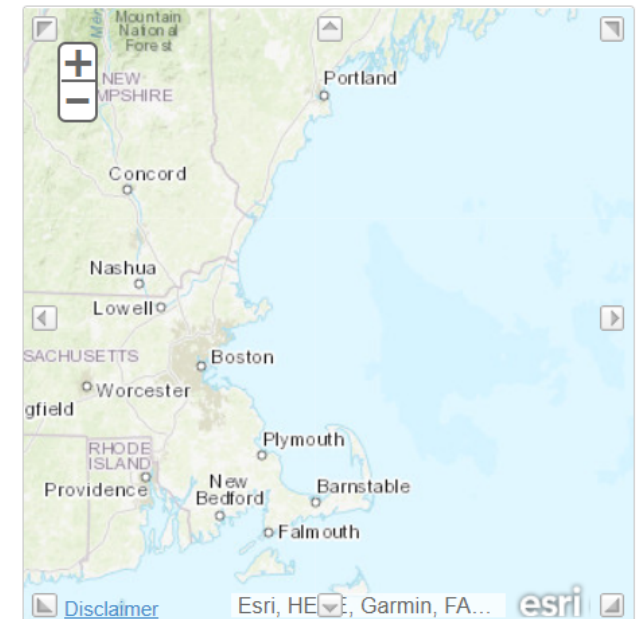
Synopsis: ANZ200-230300- 1016 AM EDT Thu Apr 22 2021 .Synopsis for Massachusetts and Rhode Island coastal waters... Strong low pres in the Maritimes will bring gale force westerly winds through this evening. Winds slowly subside into Fri and Sat as high pres builds south of the waters. Low pres from the mid Atlc coast will lift NE across the waters Sun, then move to the Maritimes Mon. For additional information on possible hazardous weather for the week ahead, please visit www.weather.gov/boston/ehwo \$\$

This Afternoon	W winds 25 to 30 kt with gusts up to 35 kt. Seas 5 to 8 ft.
Tonight	W winds 25 to 30 kt with gusts up to 35 kt. Seas 5 to 8 ft.
Fri	W winds 20 to 25 kt with gusts up to 30 kt. Seas 5 to 8 ft.
Fri Night	W winds 15 to 20 kt with gusts up to 25 kt. Seas 3 to 5 ft.
Sat	SW winds 10 to 15 kt with gusts up to 25 kt. Seas 2 to 4 ft.
Sat Night	SW winds 10 to 15 kt with gusts up to 20 kt. Seas 2 to 3 ft. A chance of rain.
Sun	SE winds 15 to 20 kt with gusts up to 25 kt. Seas 3 to 5 ft. Rain.
Sun Night	NW winds 20 to 25 kt with gusts up to 30 kt. Seas 4 to 7 ft. A chance of rain.
Mon And Mon Night	NW winds 20 to 25 kt, diminishing to 15 to 20 kt. Gusts up to 30 kt. Seas 4 to 7 ft. seas are reported as significant wave height, which is the average of the highest third of the waves. Individual wave heights may be more than twice the significant wave height.

Seas are reported as significant wave height, which is the average of the highest third of the waves. Individual wave heights may be more than twice the significant wave height.

Topographic

[Click Map For Detailed Forecast](#)



Requested Location

Forecast Area

ABOUT THIS FORECAST

Last Update:

1016 AM EDT Thu Apr 22 2021

NOAA “Click for detailed forecast”

ANZ898-230245-
1043 AM EDT Thu Apr 22 2021

.SYNOPSIS FOR NEW ENGLAND WATERS...Intensifying low pressure inland over New Brunswick, Canada this morning will stall tonight, and then gradually weaken and lift NE into the Canadian Maritimes Fri and Fri night. A strong cold front just E of the waters, will continue moving away from the area today. A series of secondary cold fronts or low pressure troughs will move SE across the waters later today through Fri night. A high pressure ridge will build E across the region Sat, then shift E of the area Sat night. Another low pressure system will emerge off the Mid- Atlantic coast Sat night, slowly track NE across the waters Sun into Mon while intensifying, then reach Nova Scotia later Mon and Mon night. High pressure will build E toward the waters Mon night.

\$\$

ANZ800-230245-
Gulf of Maine to the Hague Line-
1043 AM EDT Thu Apr 22 2021

GALE WARNING

TODAY

W winds 30 to 40 kt. Seas 6 to 11 ft, building to 8 to 15 ft. Chance of showers with vsby 1 nm or less.

TONIGHT

W winds 25 to 35 kt. Seas 8 to 14 ft.

FRI

W winds 25 to 35 kt, diminishing to 20 to 30 kt. Seas 8 to 14 ft.

FRI NIGHT

W winds 15 to 25 kt. Seas 6 to 10 ft.

SAT

W winds 15 to 20 kt, becoming SW 10 to 20 kt. Seas 3 to 6 ft.

SAT NIGHT

SW winds 10 to 20 kt, becoming S to SW 5 to 15 kt. Seas 3 to 5 ft.

SUN

S to SE winds 20 to 30 kt. Seas becoming 4 to 8 ft.

SUN NIGHT

NW winds 20 to 30 kt, increasing to 25 to 35 kt. Seas building to 8 to 14 ft.

MON

NW winds 30 to 40 kt. Seas 9 to 16 ft.

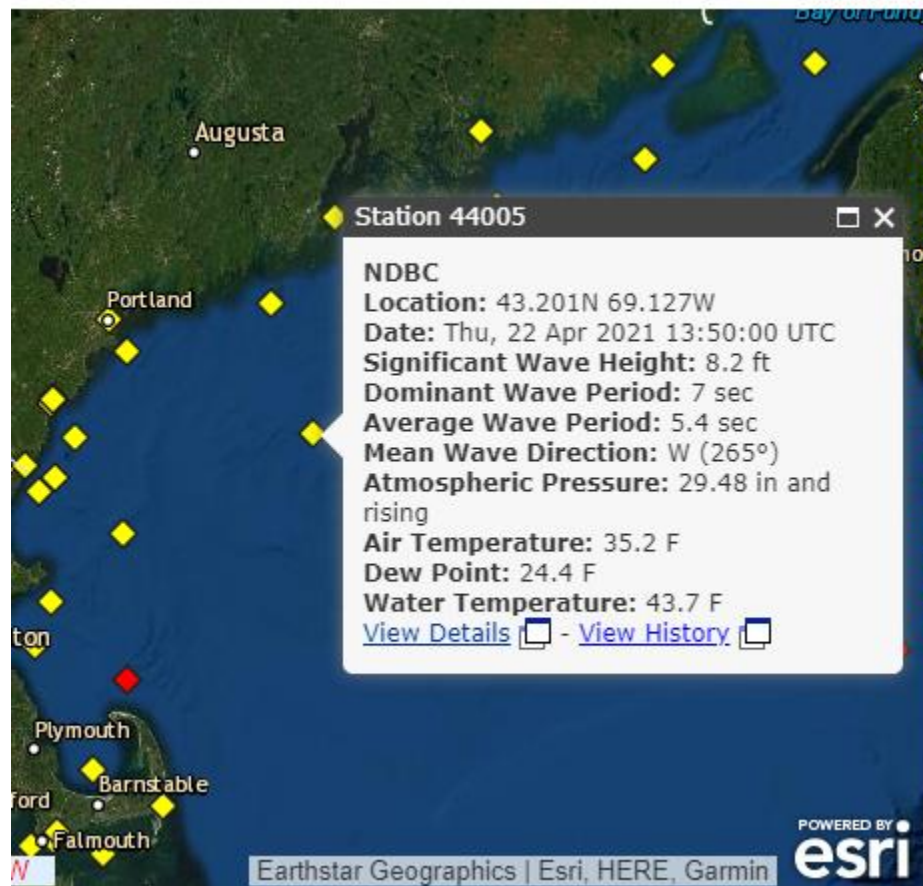
MON NIGHT

NW winds 20 to 30 kt. Seas 7 to 12 ft.

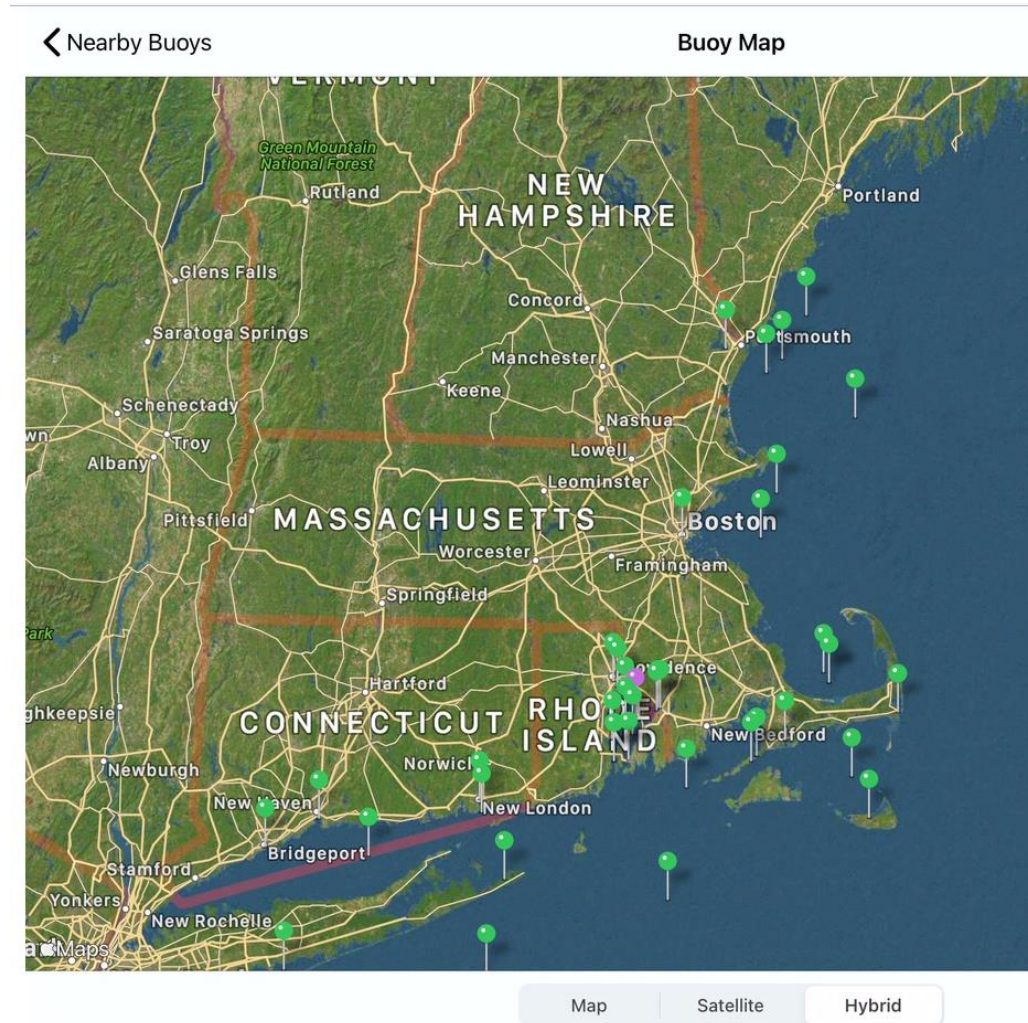
\$\$

Data Buoy Real-time Information

<https://www.ndbc.noaa.gov/>

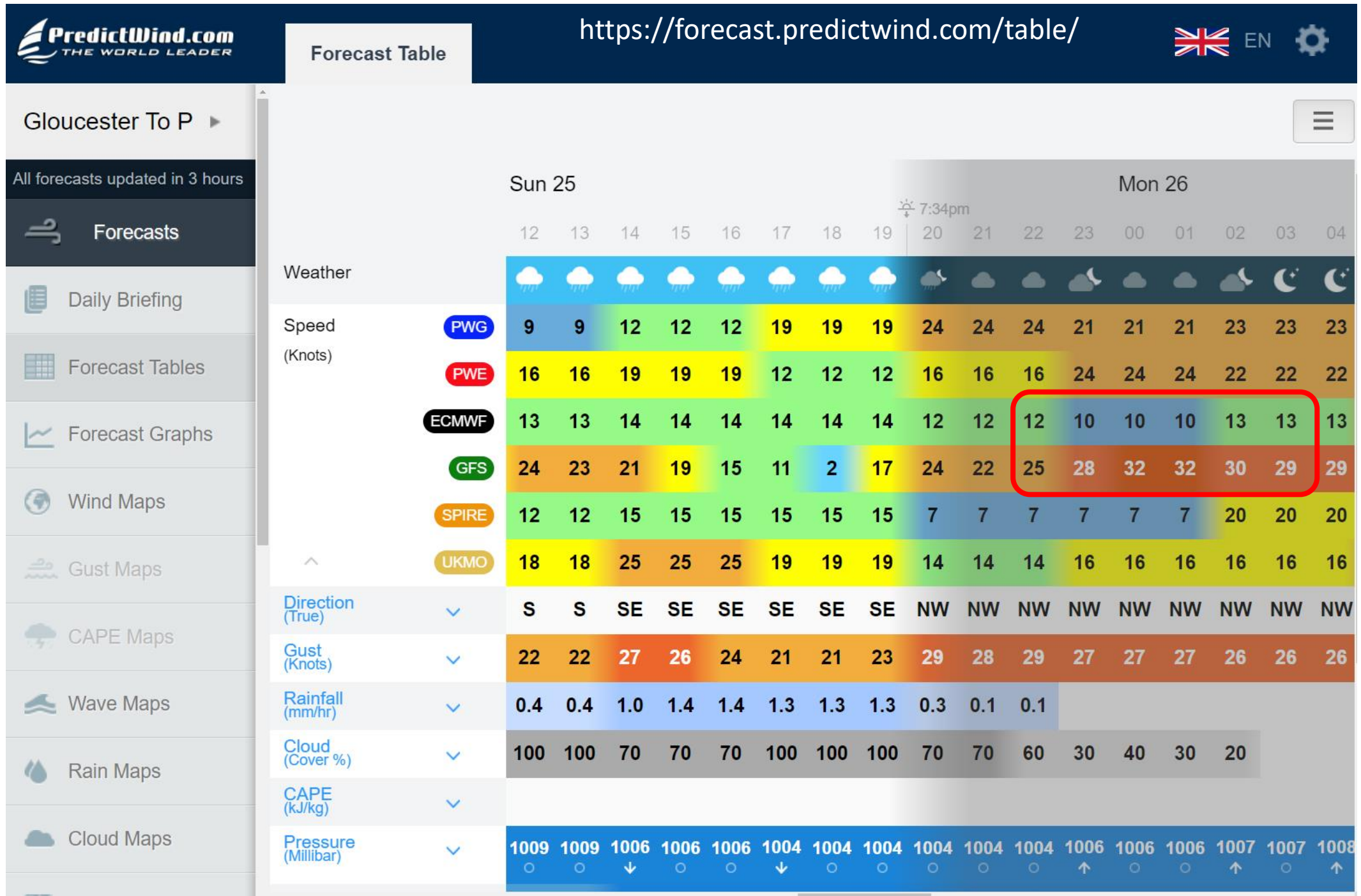


BuoyData (iPad app)



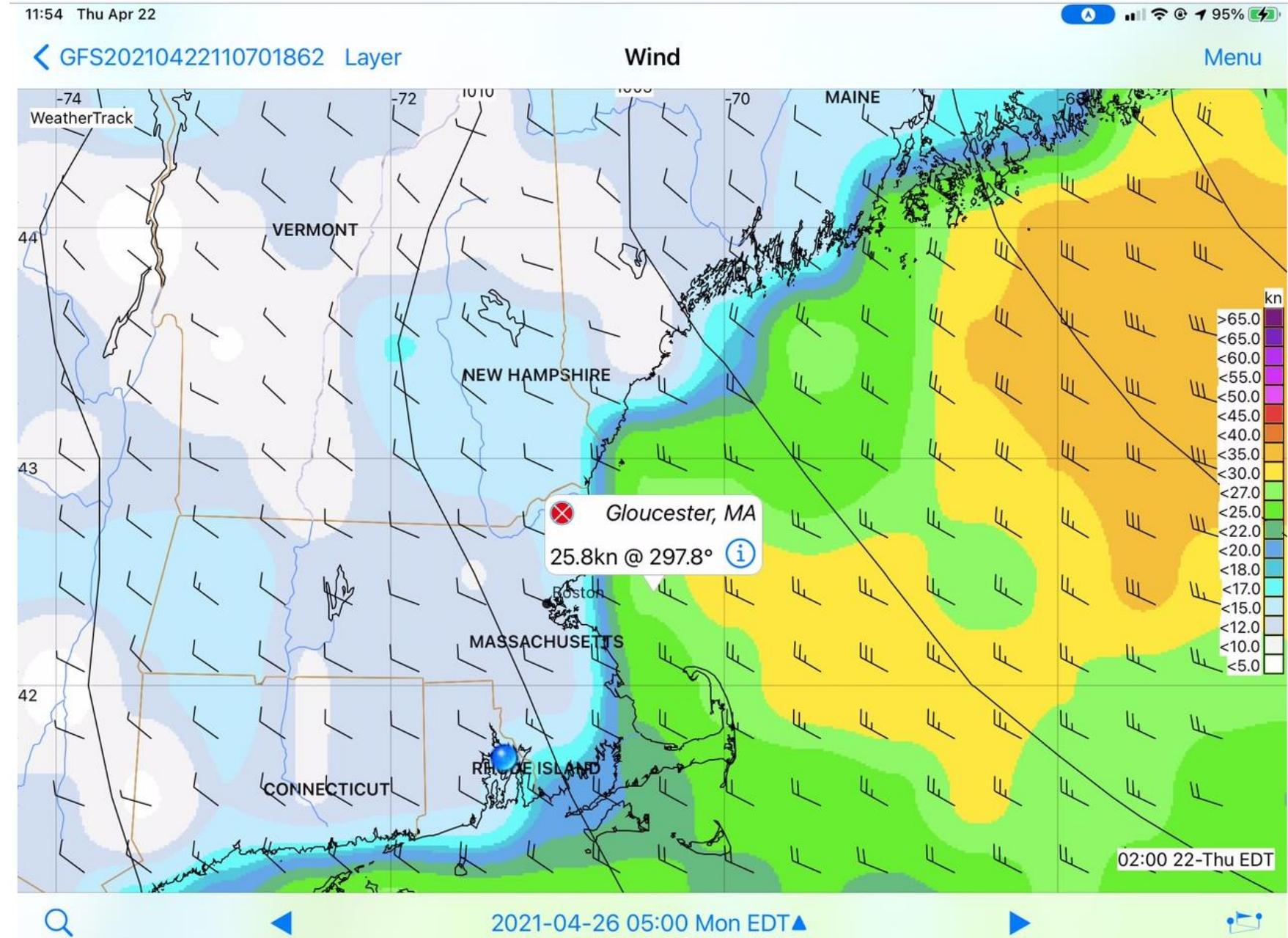
GRIB Data

By Day 4,
weather
models can
differ
significantly



WeatherTrack GFS model

- Downloads GRIB data for offline use
- Can display any layer of data
- Image per time
- Can animate weather over time



WeatherTrack Meteogram

Data associated with point
from prior image

