

Saturday, June 24 – Sunday June 25 – Third Beach

Third Beach, Newport.



Third Beach, Newport. Photo Cate Brown

DAY CAPTAINS: Stacy and EJ Dochoda “Skylark”

DISTANCE: From Bristol (17NM)

BRIEF DESCRIPTION OF PORT: If you’re looking for fine sand and calm water, this is your beach! Located at the mouth of the Sakonnet River (technically part of Narragansett Bay), Third Beach is protected by Sachuest Point from southwesterly breezes. It’s a great spot for paddle boarding, sunbathing and swimming, and you can stretch your legs in the Sachuest Point Wildlife Refuge or on a short stroll to Second Beach. Another option is the Norman Bird Sanctuary not far from where the pavilion tables are.

On most days the southwest wind fills in strongly in this area in the morning and blows briskly throughout the afternoon, producing strong waves, so be prepared for this when planning your trip.

NAVIGATION: The shortest sail to Sakonnet Harbor or Third Beach takes you under two bridges and down the Sakonnet. From the Club, sail between Hog Island and Bristol, then turn to port under the Mount Hope Bridge into Mount Hope Bay. Sail east, turning to starboard around Common Fence Point. Then sail south under the new Sakonnet River bridge, and through Tiverton Harbor and the “old stone bridge” remains then south to Third Beach.

Chart 13226 Mt. Hope Bay RI-MA

The primary navigational issue on this leg is the strong currents in the Sakonnet River in the Tiverton area where there are two narrow spots caused by the remains of old bridges. At the Sakonnet River Bridge on Saturday, June 24, you can expect an ebbing (south flowing) current

from about 13:05 to 18:18 hours. The first one is just north of the new Route 24 Bridge. The second is the remains of the “Old Stone Bridge” which is 0.8 nautical miles south of the new bridge.

It is not a problem as long as you are aware of it. It is recommended that you start your engine to help keep boat speed (through the water) high enough to assure good steering in this area.

Once you are south of the old stone bridge remains, it is best to stay in the channel and East of Gould Island.

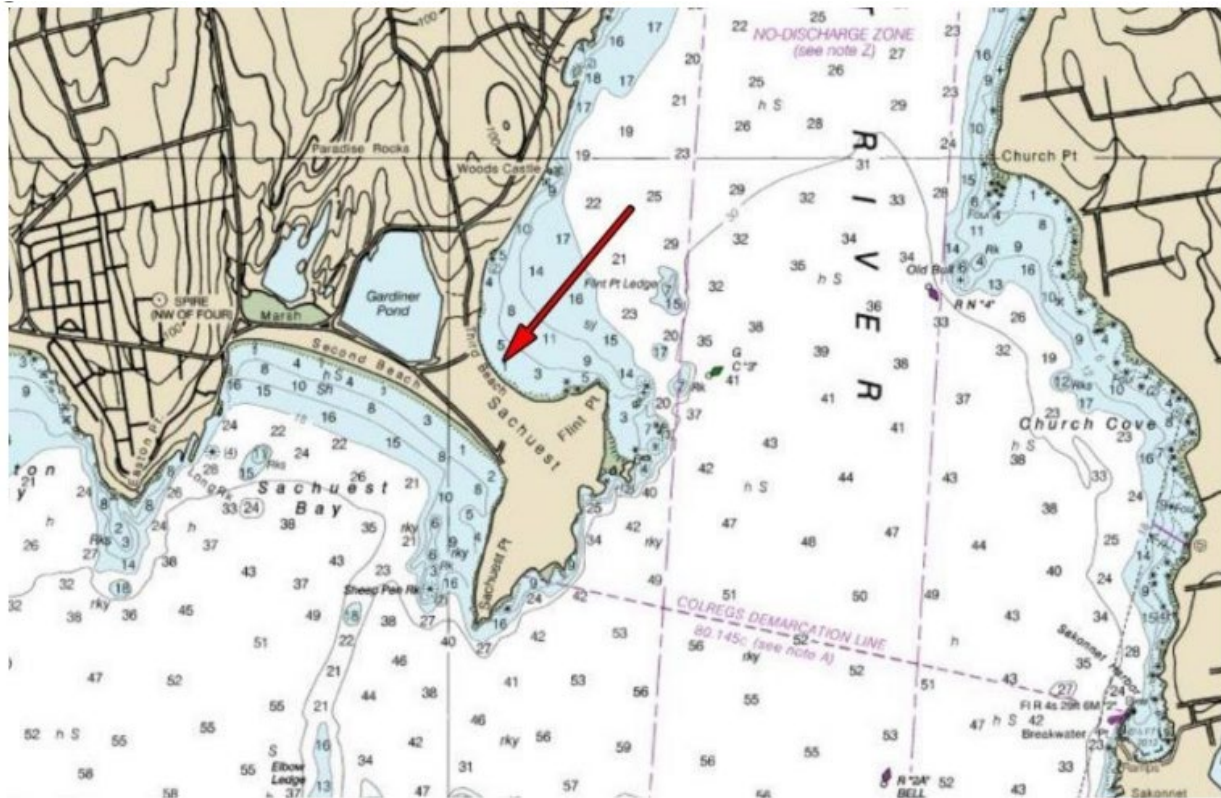
The river is wide here but shallow in the northern part. You do not have to stay in the channel, but you must keep an eye on the chart. Once you are south of Fogland it opens up. Third beach is just west of Flint Point. It is a wide sandy beach running west and then north from Flint Point.

Returning on Sunday, the current will be ebbing (south flowing) current between 6:50 and 13:47.

TIDES AND CURRENTS: At the Anthony Point

June 24 High 13:05 Low 18:18

June 25 High 13:47 Low 06:50 and 19:19



MOORINGS: Moorings will be available for rent from the Middletown Harbormaster on Dockwa beginning on 5/01 for \$20/night via Dockwa, link below:

<https://dockwa.com/explore/destination/pwce7gg-town-of-middletown-harbormaster?form=transient>

Anchoring is allowed upon approval from the Harbormaster who can be reached at (401-871-6544). It is recommended that you do not raft up in this anchorage due to often present swell in the anchorage.

FACILITIES: There are no facilities at Third Beach other than Porta-Potties in the beach parking lots and there is sometimes a Dells truck in the eastern most parking lot. Third Beach is a popular family beach because is north facing and normally will not have any wave action. If you are looking for an "Ocean" beach with waves, Second Beach is a short walk (about 0.25 miles) south.

GATHERING PLACE & TIME: We will be gathering on the beach for a potluck at 6:00 PM. Please bring a dish, appetizer, or desert. Look for the BYC burgee which will most likely be at the northwest end of the beach near the beach club.

ACTIVITY: Meet near the Pavilion, Sunday morning at 9:00 am to hike in the Norman Bird Sanctuary. Numerous Trails to choose from beginning at 0.1 mile to 1.4 miles. The NBS charges \$7/adult and \$3/child paid at the Welcome Center.

More info at <https://www.normanbirdsantuary.org/>