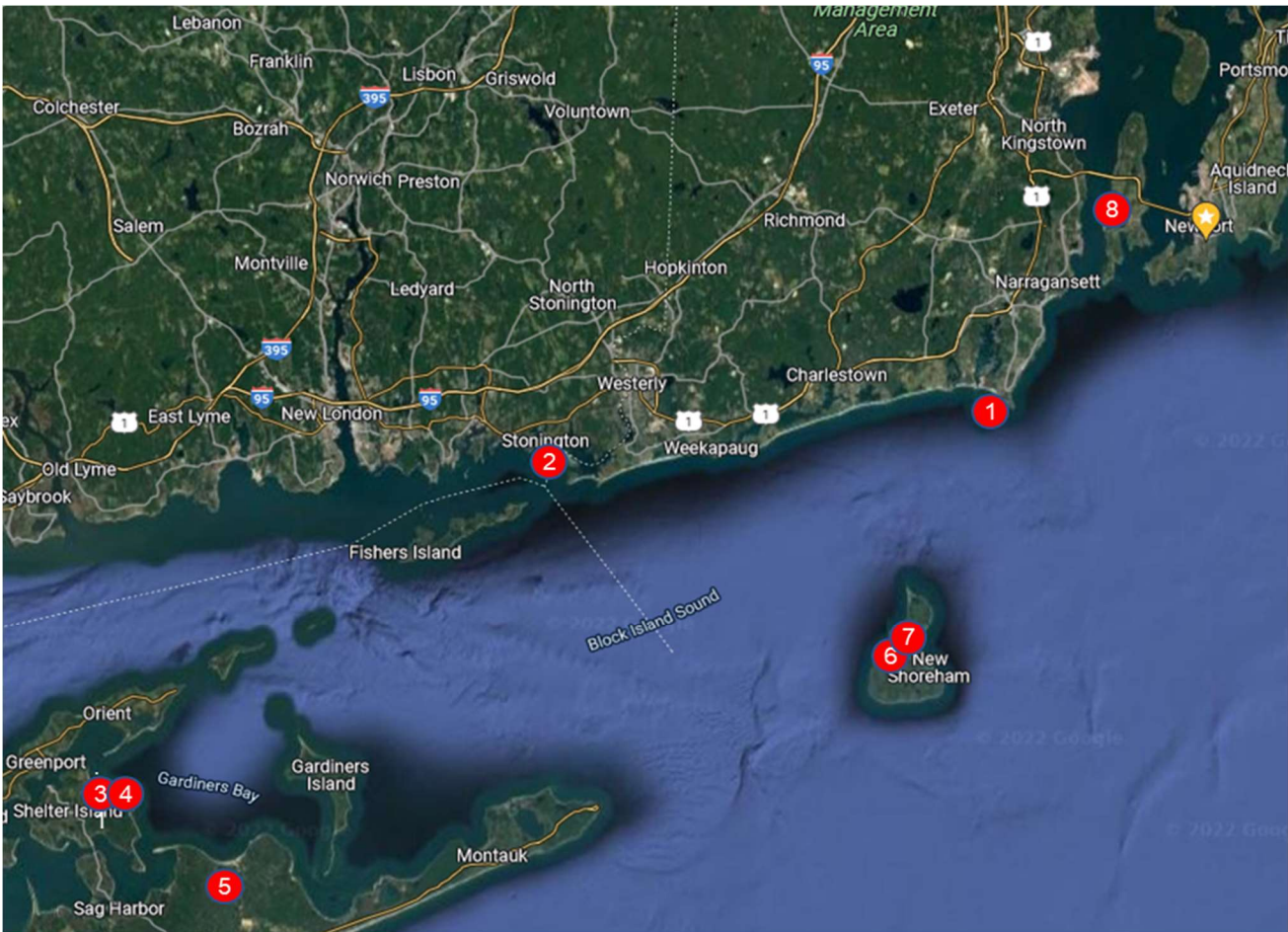




BYC Summer Cruise

July 15 - 23, 2023



Day	Port	Distance (nm)
Saturday, July 15	Pt. Judith	22
Sunday, July 16	Stonington	20
Monday, July 17	Coecles Harbor	24
Tuesday, July 18	Coecles Harbor	0
Wednesday, July 19	Three Mile Harbor	6
Thursday, July 20	Block Island	35
Friday, July 21	Block Island	0
Saturday, July 22	Dutch Harbor	21
Sunday, July 23	Bristol	14

General Information

Communication

The Fleet and Day Captains will monitor VHF channel 72 for official cruise business throughout the cruise, from sunrise to sunset. You may call Fleet Captain, Ralph Kinder by mobile phone at ?? if you need immediate assistance. There will be a daily check-in, initiated the day captain of that port at 0800 on Channel 72 to review current conditions, any last-minute sailing and evening activity updates and to answer questions. If the departure time is earlier than 8:00 due to tides, etc. the new call time will be announced the evening prior.

If you decide to not go to a port that you signed up for please make sure you notify either the Fleet Captain or the Day Captain for that port.

Flags

Please fly your Bristol Yacht Club burgee night and day so that other boats in the cruise can recognize you. Other signals may be flown at each skipper's discretion.

Navigation meetups

Skippers interested in discussion of the next day's course options inform the day captain for that port and they will review with you or ask someone else to assist. There will be a brief review of the course and any special conditions to be aware of on the daily 8:00am call.

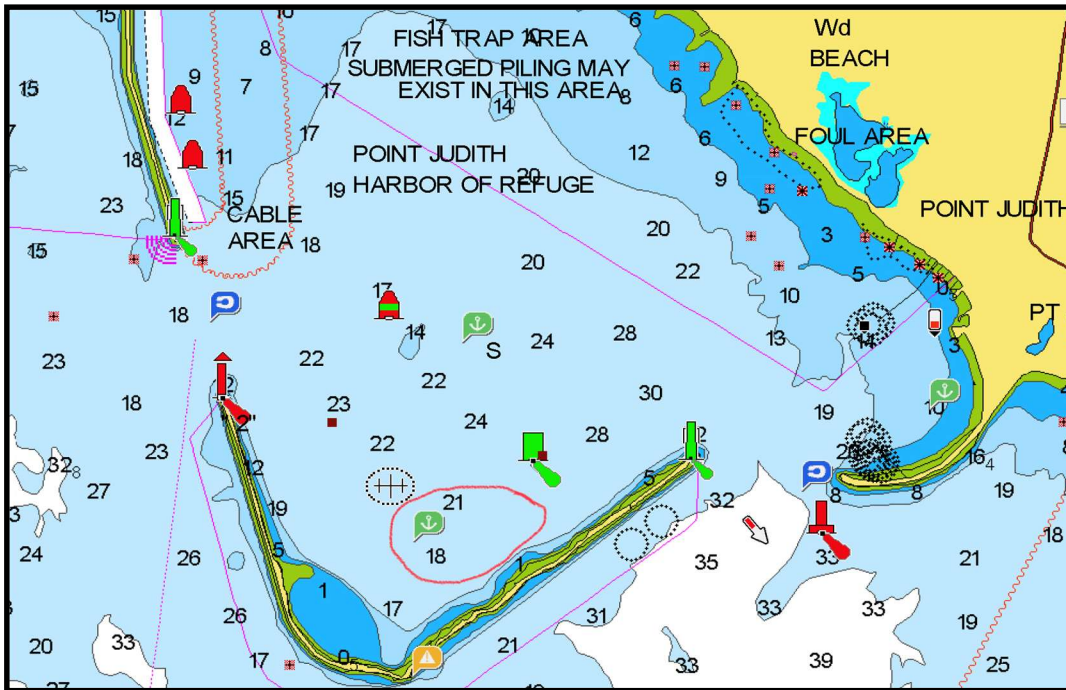
Evening Activities

Highlights of evening activities are listed below. Further details are available in the Gathering section of the specific port.

Port	Gathering Spot	Time	Libations & Food	What to Bring & Info
Pt. Judith	Dinghy raft on Boondoggle Cat	5:00 PM	DOD (Mai Tai)	Light apps
Stonington	Barn	6:00 PM	Catered buffet & DOD (Rum Punch)	Bring dinner beverage
Coecles Harbor - Monday	Coecles Harbor Marina	5:00 PM	DOD (Sea Breeze) and Potluck dinner	Bring heavy apps
Coecles Harbor - Tuesday	Maria's Kitchen	6:00 PM	Dinner menu	
Three Mile Harbor	Beach	6:00 PM	DOD (Sangria) and Potluck dinner	Bring chairs, tables, heavy apps
Block Island – Thursday	Dead Eye Dicks	5:30 and 6:45 PM	Dinner menu	
Block Island – Friday	On your own			
Dutch Harbor	Picnic Tables	6:00 PM	Pizza and BYOB	BYOB and chairs

2022 Ports of Call

Saturday, July 15: Point Judith Harbor of Refuge



DAY CAPTAIN: Steve and Jeri Devin - Seawind 1160 "Boondoggle"

BRIEF DESCRIPTION of PORT of CALL:

This anchorage offers an easy sheltered stop with good hold. You will enjoy a spectacular sunset and sunrise in good weather. No transient moorings are available. You must anchor.

DISTANCES:

From the Bristol Yacht Club, the entrance to Point Judith Refuge is about 24 nautical miles. The anchorage is inside the breakwater to the south.

NAVIGATION:

The entrance to the Harbor of Refuge is Well-marked. Your first mark to the east opening is [R FL R 4S] Red lateral buoy (shape: pillar) "Point Judith Harbor of Refuge East Entrance Lighted Buoy 2" having red flashing light with a period of 4 seconds. The harbor is well marked and has good water. We will be in the center south end. A large BYC Burgee will be flown.

TIDES AND CURRENTS:

On Saturday July 15th, high tide occurs at about 0706 and again at about 1933, with low tide at 0131 and 1248. The current in the refuge will be less than 3/4 of a knot between 1300 and 1800.

FACILITIES:

The marinas in Pt. Judith harbor, a mile and a half northwest of the anchorage, offer ice, water, and fuel, as well as deep-water dockage. The marinas at the north end of the Pond at Wakefield, a mile north of

the anchorage, offer the same. Restaurants can be found in Wakefield, Snug Harbor, Jerusalem, and Galilee.

ACTIVITY:

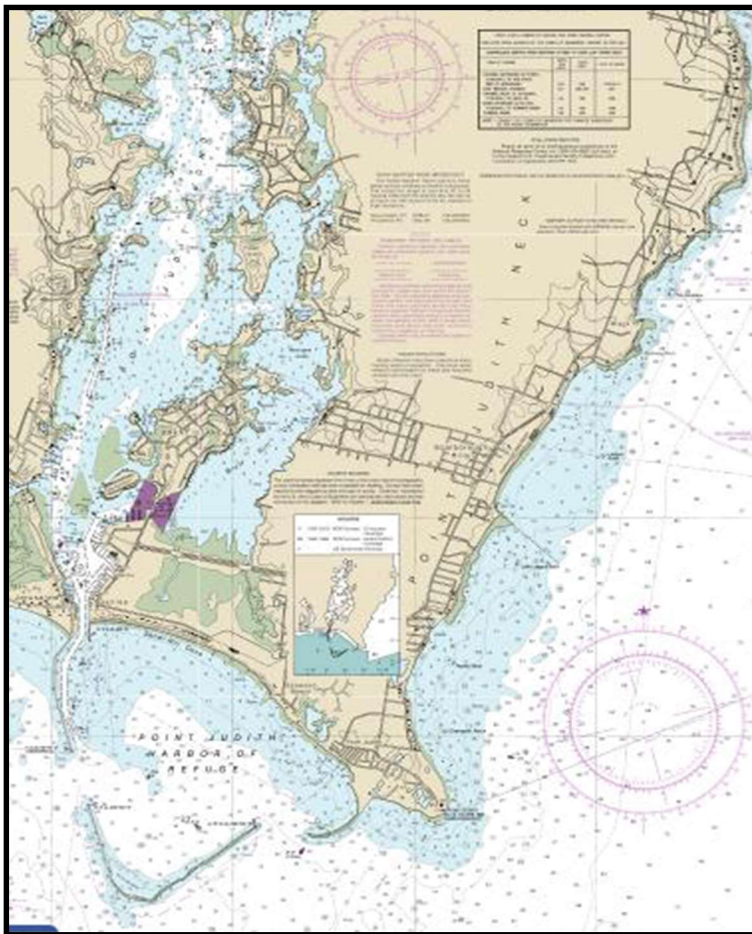
We will gather by dinghy off the stern of Boondoggle and her raft partners for your Drink-of- the-day, at 1700. Bring some hors-d’oeuvres to share if you would like.

NOAA CHART:

Chart 13219, Point Judith Harbor, can be found at <http://www.charts.noaa.gov/OnLineViewer/13219.shtml>

FURTHER READING:

Welcome to Point Judith, Rhode Island, New England Boating,



<https://newenglandboating.com/destinations/rhode-island/point-judith/>

July 16: Stonington



DAY CAPTAINS: Brian and Carole McFarland

BRIEF DESCRIPTION of PORT of CALL:

Stonington is a pretty town with a large harbor protected by entrance breakwaters, each marked by a light. We are renting moorings from Dodson Marine, a full-service boatyard at the head of the harbor on the starboard side. The Dodson launches are usually very active in the mooring field. The town of Stonington is very walkable, with shops, restaurants, classic New England architecture, and harbor views.

DISTANCE:

About 24 miles from Pt. Judith.

NAVIGATION:

Steer west from Pt. Judith along the RI coast to Watch Hill Point, R2 (wave to Taylor Swift as you pass). Continue west to flashing red #6 at Napatree Point Ledge and then turn northwest to R2 at Middle Ground. Head north past the two lighted breakwaters and into Stonington Harbor.

TIDES AND CURRENTS:

High tide at Pt. Judith on the morning of July 16 is at 7:39 am. Leaving Pt. Judith, anywhere near 8am will provide a fair current with the tide flowing west early in the morning. Mid-morning the tide will turn east. On Sunday, Low tide in Stonington Harbor is 1:53 pm. Leaving on Monday, high tide in Stonington is at 9 am.

ANCHORAGE:

Moorings at Dodson Boatyard are first come first serve. Two days before you arrive call the boatyard at 860-535-1507 and let them know you are coming on July 16 with the Bristol Yacht Club. When you arrive

in the harbor, hail the Dodson Boatyard launch on channel 78A when you arrive, tell them you are with BYC, and they will assign you a mooring. The cost of a mooring is \$106.35 a night up to 39 feet and \$132.94 for 40 to 49 feet. The cost for boats 50 to 79 feet is \$186.11. It is customary to tip the launch drivers a dollar or two per trip when you go ashore.

FACILITIES:

Dodson Boatyard has a launch, pump out, showers, ice, water, fuel, and laundry. The boatyard has the Dog Watch Café Restaurant, the Dog Pound outdoor bar, and a gift shop.

GATHERING PLACE & TIME: Dinner will be a catered buffet at 6 pm at a boat hangar on Water Street to the East of the Dog Watch Café. The caterer will provide all seating, plates and utensils. The cost per person is \$50 for adults and \$17 for kids 5 to 12. Kids 4 and under eat free. The buffet dinner is Rotisserie Chicken, Pulled Pork Sliders with Mustard Slaw, Macaroni and Cheese, Corn on the Cob, Corn Bread, a Greens, Pear and Pecan Salad and Brownies and Cookies for dessert. The Drink of the Day is Rum Punch and drinking water will be provided. You are welcome to BYOB.

If you are looking for a restaurant for lunch, we have two recommendations. The first is the Dog Watch Café at 194 Water Street. The second restaurant is Breakwater at 66 Water Street. You can walk to this restaurant or take your dingy to their dinghy dock.

Top sites to visit in Stonington include The Stonington Lighthouse and Captain Nathaniel B. Palmer House.

NOAA CHART: Block Island Sound, 13205

FURTHER READING: Trip Advisor, Stonington:

<https://www.tripadvisor.com/Home-g33939?fid=2476b16c-ed52-44a6-b281-cdd6aa6b0a52>

July 17-18: Coecles Harbor



DAY CAPTAIN(S): Paul & Sherrie Norton, “Grace” Paul’s mobile 914-329-2544

DISTANCE: (From prior night’s port of call) 23.9 miles

BRIEF DESCRIPTION of PORT of CALL

Coecles Harbor is a favorite for cruisers known for its quiet anchorage, the Coecles Harbor Marina, and many activities. For those with a draft of 6’ or greater the anchorage area will be your best option. Others will have the choice of anchoring or staying at Coecles Harbor Marina who offers both slips and moorings.

NAVIGATION:

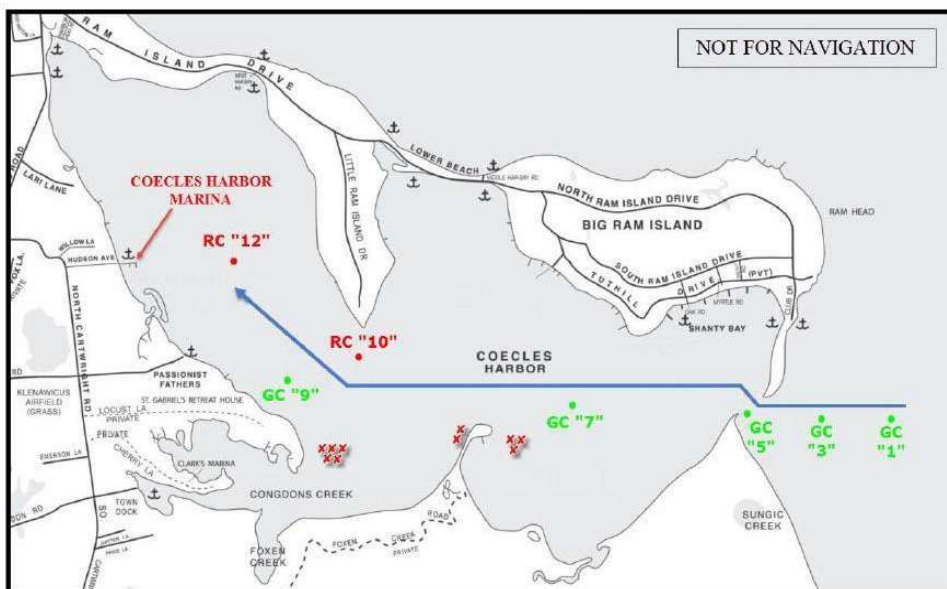
Starting from Stonington, Coecles is good for a midday arrival on the 17th. When leaving Stonington you will head south to pass through Lord's Passage. This will take you past the east end of Fisher's Island. Low tide at Stonington is 3:40am the morning of the 17th and it is 23.9 miles from harbor entrance to harbor entrance.

There will be an east to west current when you leave but will break out of it once you are through the passage. You will continue to be set west as you pass The Race and Plum Gut.

Entering Coecles Harbor requires close attention to how much you are being set to avoid finding yourself outside the channel and touching soft sand. It is a good idea to look behind you occasionally to see that you are staying in the channel. Below is a guide to Coecles Harbor Marina. The anchorage area is a marked area south of green can “7”

GETTING HERE

Approaching the entrance to Coecles Harbor, observe the green buoys to port, then favor the center of the channel at Reel Point. The entrance was recently dredged to 8' at MLW. Inside the harbor heading west, follow navigational aids and maintain center of waterway. Give RC "10" a wide berth of at least 40 yards. The depth between RC "10" and GC "9" is 5.5 ft at MLW. This is the shallowest area of the harbor and the bottom is soft. Continue northwest to RC "12" and pick up the green privately maintained markers leading to the marina. The normal tidal range is 2.5 ft.



TIDES AND CURRENTS:

Coecles Marina recommends boats with a draft greater than 5' come in on the flood before high tide. Monday, July 17th high tide will be at 11:43am and for Wednesday, July 19th high tide will be at 12:57pm.

ANCHORAGE:

Coecles Harbor has a large comfortable anchorage with depths from 9' to 11'. The dinghy ride from the anchorage to Coecles Harbor Marina, where activities are taking place, will be about a mile and a half.

The club has reserved both moorings and slips at Coecles Harbor Marina. Reservations can be made through Dockwa. Please note on your Dockwa reservation that you are with the Bristol Yacht Club cruise.

FACILITIES:

Coecles Harbor Marina is a full-service marina offering water, ice, fuel and repairs. They also offer bike and eclectic cart rentals.

GATHERING PLACE & TIME:

On Monday, July 17th we will gather at Coecles Harbor Marina for a drink of the day and potluck dinner at 5:00pm

On Tuesday, July 18th, for those who wish to join, we will have Mexican food at Maria's Kitchen adjacent to the Shelter Island Brewery at 6:00pm.

If you would like to have dinner on your own on Tuesday, restaurant options include:

- Sunset Beach 4.2★ \$\$\$\$

- Ram's Head Inn 4.5★ \$\$\$
- Shelter Island YC 4.7★ \$\$\$
- Leon 1909 4.3★ \$\$\$
- Salt 4.4★ \$\$
- Commander Cody's Fish Shoppe 4.4★ \$\$
- The Islander 4.3★ \$\$

NOAA CHART: 12358

FURTHER READING:

There are many things to explore while inside Coecles Harbor. If you have a good reliable dinghy, you should be in for a real treat.

Taylor Island: Taylor Island (or Cedar Island as it is also called) is open to explore to the general public. You can take your dinghy to the shore and explore the beautiful grounds and home. Please leave the island the way you found it so that others can continue to enjoy it.

Congdons Creek: Congdons creek is located in the southwest corner of the harbor, just beyond Taylor Island. The creek is full of wildlife and is great for curious explorers. It also is the home of many of the local fishing boats for Shelter Island. Clarks Marine and a town landing are also located in this creek.

Mashomack Preserve: Mashomack Preserve is located in the anchorage area (southeast section of the harbor). Visiting boaters are welcome to explore the beaches and hike the local trails. For more information on Mashomack..... [CLICK HERE](#).

Shelter Island Kayaks does many tours from Coecles Harbor. Jay is a wonderful guide who is safe, friendly, and knowledgeable of the area. He will show you around Coecles Harbor with a whole new perspective. Many of his tours take you through Congdon's Creek, into areas of Mashomack and other wildlife areas. Jay gives a great tour and a very reasonable price. If you have never been in a kayak before, it really is a wonderful experience. You can contact Shelter Island Kayaks at 631 749 1990.

July 19: Three Mile Harbor



DAY CAPTAIN(S): Bill (and Jeanne) Barlow c: 401-480-5299

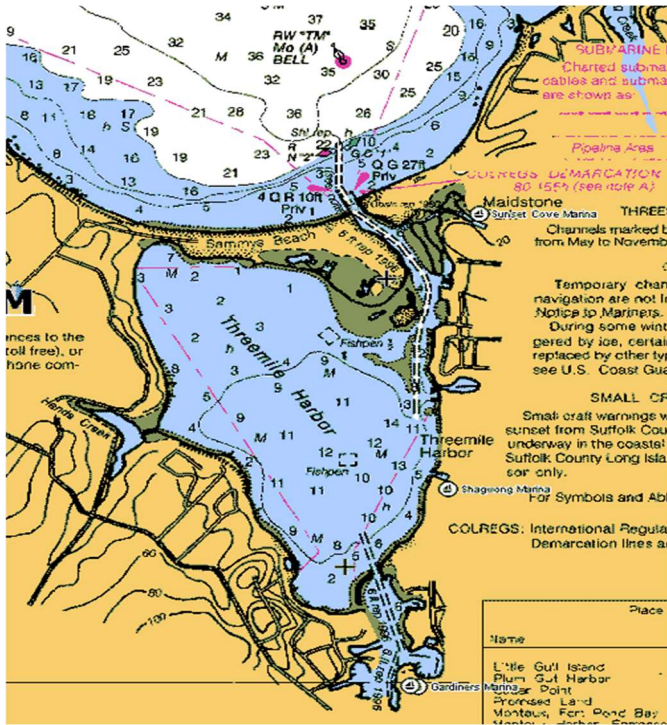
BRIEF DESCRIPTION of PORT of CALL:

Three Mile Harbor Three Mile Harbor is located at the southern shore of Gardiners Bay between Sag Harbor and Amagansett. This beautiful harbor is East Hampton's most popular port with access to marinas, anchorages, and more. The harbor is well protected and offers a beautiful natural anchorage. The harbor is extremely long and very shallow along the west side of the channel. More information on navigation is below.

DISTANCE: From Coecles Harbor entrance to Three Mile Harbor entrance is about 6 nm, and figure about 2 nm within each harbor to get to/from the group resting position (if anchoring in Coecles you'll be about ½ nm from the entrance).

NAVIGATION:

From Coecles Harbor it is a straight shot southeast from G"1" (or wherever you decide to turn right) to N"2" at the entrance of the channel to Three mile Harbor.



Approaching Three Mile Harbor

Three Mile Harbor Entrance Buoy 1 (Green) and Red lateral buoy (nun) "2".

The waters outside Three Mile Harbor are open and deep. In approaching the channel, the depth drops off significantly outside the channel. There was (I don't see it on my chart) a red and white mid channel marker approximately half a mile from the entrance to harbor indicating the channel. Outside the channel near the beaches, the water is approximately 4-5 feet deep. There is a public beach and jetty located on the eastern side of the channel. There is enough depth on the western side for some boats to anchor, but it may be very rough with all the traffic from local boats.

To enter the harbor, pass through two jetties to access the inner harbor. The channel is narrow with a current (up to 3 kts) that will either help or

hinder your entrance to the harbor.

Inside the Harbor

Once inside the jetties the channel is well marked with red and green buoys. Stay in the channel. The channel is dredged every few years and can accommodate large vessels. These channel markers are privately maintained from April through November.

MOORING & ANCHORAGE:

At Three Mile Harbor, BYC boats will be anchoring inside the harbor. The anchorage area is located on the starboard side of the harbor as you enter (west to northwest side of the harbor). The anchorage area inside Three Mile Harbor offers plenty of depth and swing room. There is a sand and mud bottom offering a good holding ground.

To access the anchorage, follow the channel deep into the anchorage. There is a large sandbar along the western side of the channel. The sandbar begins approximately half a mile inside the entrance. You will not be able to pass over this sandbar. At the northern point of the sandbar the depth is only a few inches at low tide. To access the anchorage area, **continue past Green 19 and a private Green in the channel and continue well beyond the private marker prior to turning into the western section of the harbor. Pay close attention to the chart and depth.**

Once inside the anchorage you will find an ample amount of water with a good holding ground for anchoring. There is a water ski area where you cannot anchor and should avoid due to boat wakes. The northern and northwest corners of the anchorage area become very shallow (3-5 feet), so larger vessels will want to stay in the middle of the anchorage.

FACILITIES:

The East Hampton Harbor Master has free pump out service and fuel at Green 19. Call the Harbormaster on pump out boats on VHF channel 9. Phone number is 631-329-3078. There is also a free pump-out boat Thursday – Monday beginning at 9:00am.

Three Mile Island Marine Services:

<http://www.ospreysguide.com/CruiseGuide/cruiseEH/cruiseg3MI/cruisg3MIMServ.html>

GATHERING PLACE & TIME:

BYC will assemble on the beach at 6:00 pm. The exact location suggested by the Harbor Master is the western beach of Key Island (no fires please). Key Island is described as the southern island between the harbor and the channel, see the note on the photo of the Harbor. BYC will provide the drink of the day which will be Sangria. Please bring appetizers to share and tables and chairs

TIDES AND CURRENTS:

High tide at Three Mile Harbor is at 12:02 PM on 19 July 2023 and low tide is at 6:30 AM on 20 July 2023.

FURTHER READING:

For more detail see: <http://www.ospreysguide.com/CruiseGuide/cruiseEH/cruisgEH.html>

July 20-21: Block Island



DAY CAPTAINS: Steve and Nancy Barron, Morgan 38cc, "*Blessings*"

DISTANCE: From Three Mile Harbor to Block Island (33 nm)

BRIEF DESCRIPTION OF PORT OF CALL:

Block Island is located off the coast of Rhode Island, approximately 14 miles (23 km) east of Montauk Point, Long Island, and 13 miles (21 km) south from mainland Rhode Island, from which it is separated by Block Island Sound. It was named after Dutch explorer Adriaen Block.

Block Island has no natural harbors. Breakwaters were constructed in 1870 to form Old Harbor on the east side of the island. New Harbor, with its entrance on the west side of the island and where we are gathering, was created in 1895 when a channel was dug to connect the Great Salt Pond to the ocean through the land.

NAVIGATION:

Leaving Three Mile Harbor, it's about an 8 mile course from RW Bell "TM" outside the harbor following around the channel past Lionhead Rock (C"13") past the shoaling south of Cartwright Is (the small sand strip extending from Gardiners Is) and passing N"8", N"6", N"4", N"2" out to RW Bell "S" by Goff Pt. Pay attention to the marked channel in this area as there are several shoal areas under 5'.

From the RW Bell "S", its 8mi on a course of 066m to the buoy at Shagwong Reef G Bell "SR".

It's recommended to leave Shagwong Reef (G Bell 7"SR" Fl G 2.5s Bell buoy, 41-07-02.223N, 071-54-49.540W) off your starboard, giving the 6' and 12' shoals their due, while also staying out of the stronger tide rips that run around the end of Long Island.

Once clearing Shagwong Reef, it is a straight 15.4mi shot of 086m degrees and open water to the entrance of the Great Salt Pond on Block Is. In reduced visibility, be alert for traffic along this course as it's the direct route between Montauk area harbors and Block Is.

Make note of the currents and possible set of your course depending on your time of passage (per Eldridge): **Current in Block Island Sound will be against us until about 1:15PM when the Ebb starts.**

When approaching Block Island from ~ 3 Mile Island, from the WSW as we will be, Block Island will likely first appear as two islands with the north elevations being ~100' above sea level and the southern end being the taller, ~150'.

On the northern most end of the island, Sandy Point, is the North Lighthouse w a Fl 5s light with a height of 58ft. Approaching from Montauk, the Block Island Southeast Light is also visible on the far side of the island, given its height of 261' w a Fl G 5s light visible for 20 miles and a horn every 30s when visibility is reduced.

Entrance Bell buoy R"2" (41-12-05.370N, 071-35-39.027W) marks the entrance channel to the Great Salt Pond (also called New Harbor) and is ~1.75 NM south of the North Lighthouse on Sandy Point (Built in 1867).

At the entrance on the end of the breakwater there is Breakwater Light "4", a 49' skeleton tower R"4" with a flashing red light visible for 8 NM also equipped with a HORN every 10s in reduced visibility. (To activate horn, turn VHF to Ch 83A and key your microphone 5 times consecutively which will activate the horn for 60 min.)

The entrance to Great Salt Pond is straight forward however the channel can be very crowded with traffic. Note that the channel runs parallel to the jetty but not right adjacent to it. Line up R"2", R"8" and R"10" to stay in the fairway.



TIDES AND CURRENTS:

July 20: Block Is High Tide 10:33AM, Low Tide 4:05PM

July 21: Block Is High Tide 11:10AM, Low Tide 4:46PM

MOORINGS AND ANCHORAGE:

Upon arrival into the Great Salt Pond (requested no earlier than around 1pm) arrivals should contact the Block Island Harbormaster on VHF channel 12, identify themselves as being members of the BYC cruise and ask for a mooring assignment.

Should you decide to anchor, note that The Great Salt Pond has notoriously poor holding ground. It's recommended if you do anchor to use a Danforth type anchor in the center harder bottom areas and a plow around the edges in softer areas and use plenty of scope (easier said than done given the summer crowds using the anchorage). The far eastern side of the pond is said to have lots of oyster shells and a submerged water supply line, both making it a poor location to attempt to anchor. Note to the prohibited anchorage area in the northern quarter of the pond.

GATHERING PLACE & TIME:

Thursday's group dinner is at Dead Eye Dick's restaurant. There will be two seating times (5:30 and 6:45 PM). Dead Eye Dick's is just south of Payne's Dock in New Harbor/Great Salt Pond.

Friday is a free day and no dinner or gathering is planned. Below is a list of possible activities.

FACILITIES:

<http://cruising.coastalboating.net/Destinations/NE-US/Islands/BlockIsland/Boat-Crew.html>

Pump Out: Champlin's onsite on call. Efficient high-speed pump-out via 3 boats on ch 73. Tips appreciated.

Dinghy Docks

1. At Champlin's Marina
2. At the Block Island Boat Basin, near the Oar restaurant, however one can only use the on-land side where I'm told low tide makes it interesting.
3. At the new Town docks, in the SE corner of the harbor between Payne's and Dead Eye Dicks

The best dinghy dock is the new dinghy dock on the channel into the "Hog pen" in the SE corner of the harbor. The dock is located between Payne's Dock and Dead Eye Dick's restaurant. It is the new town dingy dock.



Possible activities if arriving early Sunday or staying Monday:

1. **Quahog adventure:** Dig for quahogs. Low tide on **Saturday is around 4:46pm**. See the link for BI shellfish regulations (<http://www.new-shoreham.com/docs/ShellfishBroch.pdf>). Go to the harbormaster shack at 9 am (that's by the west side of the boat basin - the Oar), **with photo ID and \$20 or \$10 (over 65)**, to get the required shellfish licenses (made up in the shack with photo) and then proceed to flats (areas 2 and 3 on map). We should be able to find quahogs of appropriate size. You can just use your fingers and feet, but rakes are ok too.
2. **Block Island Taxi Tour** Perhaps the best way to learn the most about Block Island in the least amount of time is to take in the sights with a narrated taxi tour. There are no tour bus or trolley companies on the island, so a "taxi tour" is the way to go.

In just about an hour's time, you will travel the entire island, from the granite North Light overseeing the Block Island Wildlife Refuge at the northernmost point to the stunning Mohegan Bluffs, rising 150 feet above the sea below.

Many of the drivers are long-time island residents, so you'll learn all about the island of today and yesterday, while getting the inside track on where the locals like to eat, drink, shop, fish and enjoy sun and surf. Most Block Island taxis fit between 8 and 11 people, so no worries if you're with a group. You can go to the Taxi Stand at Old Harbor to grab a cab, or call a taxi to pick you up. For a list of taxi companies and phone numbers, go to <http://www.blockislandinfo.com/what-to-do/tours/tours-by-land>.

3. **Abrams' Animal Farm** A collection of exotic and domestic animals is maintained by Justin Abrams, owner of the 1661 Inn & Hotel Manisses. The small hobby farm between Spring and High streets is home to llamas, emus, sheep, donkeys, goats, swans, ducks, even camels on the hillside meadow south of the hotel. Feed is available for the hungry goats and emus. No charge and accessible from dawn to dusk. Spring Street. Phone: 401-466-2421
4. **Horseback Riding.** *Rustic Rides Horse Farm*, 1173 West Side Rd, New Shoreham, RI 02807. Guided trail rides to the beach and nature preserve. Ages 4+, no experience needed. (401) 466-5060 for reservations

5. *Pond & Beyond Guided Kayak Tours*. Daily eco-tours, kid programs, family tours, groups, full moon paddle, sunset paddle, women only. Instruction for beginners. Tour reservations recommended. Experience the island via kayak, guided by an islander—a naturalist. Various boat styles are available including touring boats by Perception and Wilderness, kid-size boats and tandems. Tours approx. 2 hours on the water. Custom tours available. Located on Ocean Ave. at Smuggler’s Cove.
corrie_estelle@hotmail.com. Phone: 401-578-2773
6. Also, *Fort Island Kayaks* Offering single and tandem kayaks, and rental snorkeling gear. Call for reservations and information. Ocean Ave, next to the bridge in New Harbor. Phone: 401-466-5392
7. *Historical Society Museum*. Interesting exhibit of artifacts from the farming and fishing period to the rise of tourism in the Victorian era. The featured summer exhibit is “Block Island Idyll: Memories of Manisses.” Also “Sperry Andrews: Paintings of Old Block Island.” Ask about guided tours of the Island Cemetery, Old Harbor area and Native American sites. Old Town Road. Open daily 11 a.m. to 4 p.m. Admission \$6, seniors and students \$4, children free. blockhistory@me.com. Phone: 401-466-2481
8. *Island Bike & Moped* Behind the Harborside Inn selection of rental bicycles and new model mopeds, mountain bikes, beach cruisers, tandems and tag-alongs. Six-speed Jamis Boss Cruisers and 21-speed mountain bikes are for rent. Children’s seats, helmets and eye protection are available. 8 a.m. to 7 p.m. daily. Located at Chapel Street, just off Water Street. Phone: 401-466-2700. Also, *Moped Man and Old Harbor Bike Shop*. Water Street, across from the ferry. 401-466-2029
9. *Historic Empire Theater* <http://www.empiretheaterblockisland.com/> Evening and rainy-day matinee movies. Built in 1882 first as a roller-skating rink and then in the 1890s converted into a theater, and now serves as the island’s movie theater with occasional playhouse productions. 17 Water St.
10. **Block Island Maritime Institute** <http://bimaritime.org/our-mission/>.
11. Tour aboard an Oldport Marine’s launch and get some little-known facts about the history, folklore, and ecology of Block Island’s treasure – The Great Salt Pond. \$20 pp. MUST call 401-500-3501 to reserve a spot. Many other programs, several oriented for children: <http://bimaritime.org/for-early-learners/>
12. *Visit/hike Mohegan Bluffs and the Southeast Lighthouse*: The Mohegan Bluffs are large clay cliffs about 150 feet high, located on the southern shore of Block Island. These cliffs are a beautiful site, and can be observed from the top, where visitors can look out for miles on the Atlantic Ocean or visitors can climb down the steep staircase of over 100 steps and view them from the beach (also known as Corn Cove). Through the years, the Mohegan Bluffs have eroded about 250 feet, and because of this, the Block Island Southeast Lighthouse had to be moved back about 360 feet to keep it from tumbling into the ocean. NOTE Southeast Lighthouse is undergoing repairs and while it can still be visited, one cannot climb the tower.
13. *Hiking on the Island (and Blown Glass Art Globes treasure hunt)*: <https://www.alltrails.com/us/rhode-island/block-island?search=true> Explore and find one of more than 500 glass orbs around Block Island’s greenways which Artist Eben Horton famously hides each summer in a project that’s half treasure hunt, half conservation education.
14. Island Restaurants
<http://cruising.coastalboating.net/Destinations/NE-US/Islands/BlockIsland/Dining.html>

NOAA CHART:

Block Island Sound and Gardiners Bay #13209_1
 Block Is Sound, Pt Judith to Montauk Pt #13215_1
 Block Island Sound and Approaches #13205
 Great Salt Pond #13217

July 22: Dutch Harbor

DAY CAPTAINS: Bruce and Carolyn Winter



BRIEF DESCRIPTION of PORT of CALL:

Dutch Harbor is on the quiet (West Passage) side of Conanicut Island. Jamestown is less than a mile away or a 15- to 20-minute walk to the east on Narragansett Avenue. Dutch Harbor is quiet, protected, and unspoiled; it affords memorable sunsets on clear evenings.

DISTANCE:

From Block Island, Dutch Harbor is approximately a 20 nautical-mile sail.

NAVIGATION:

Begin your sail at the R-2 BELL at the entrance to Great Salt Pond then use the waypoints below to arrive at Dutch Harbor.

#	WAYPOINT	COURSE	DISTANCE (nm)	COMMENTS
1	G-1 BI FI G 4s BELL Block Island North Reef	029'm	3.5	Always keep safely to starboard
2	R-2 FL R 4s WHIS South of Pt. Judith	073'm	5.5	
3	G-3 FL G 4s GONG at Whale Rock	031'm	8.6	Leave to port
4	RG "DI" FL (2+1) R 6s GONG South of Dutch Island	029'm	3.0	Leave to port

After arriving in Dutch Harbor head toward the Dutch Harbor Boat Yard (DHBV) fairway (at right in photo) flanked by green and red buoys. Upon entering the fairway, hail DHBV on VHF channel 69 for your mooring assignment, stating that you're part of BYC and the name of your boat.

TIDES and CURRENTS:

Low tide (Quonset Point) 0.53 feet at 4: 56am; high tide 3.61 feet at 11:49 am.

MOORINGS and ANCHORAGE:

Reservations at DHBV should be made via Dockwa. The cost is \$74 per night. DHBV does not allow rafting. Launch service runs from 0800 until 2200 hours; hail the launch on VHF channel 69.

There is an anchorage north of DHBV's mooring field. Avoid the aquaculture farm further north.

FACILITIES:

DHBY offers free WiFi, restrooms, indoor and outdoor showers, laundry, and ice. There is no fuel available.

The town dock south of DHBY has water, pumpout, and dinghy docks. The DHBY dock is reserved for the launch.

The Scuttlebutt Snack Bar (at DHBY) serves lunch (sandwiches, ice cream and beverages).

A grocery store, McQuade's Marketplace (6 Clarke Street), is 0.6 miles from DHBY just off Narragansett Avenue.

Jamestown Wine and Spirits is on Southwest Avenue across the road from McQuade's.

The Village Hearth Bakery and Cafe (2 Watson Avenue) is 0.7 miles from DHBY and prepares baked goods, beverages, and breakfast and lunch items in-house.

A variety of restaurants, bars and shops may be explored in the village which is less than a mile away.

GATHERING PLACE and TIME:

We'll meet at the picnic tables (between the dock and the boat yard's large shed) at 1800 hours. There will be pizza and salad for dinner. BYOB. Please bring your own chair if you'd like other seating. Enjoy the sunset!